

Overview - Delta Series Audio Controllers

The Delta Series Audio Controller is an affordable, feature-rich multi-zone audio distribution system that allows control and distribution of audio from 4 sources and to 4 or 6 zones.

- The DAS-D0404 (FG1100-01) controls of up 4 sources and distributes audio to 4 rooms/zones.
- The DAS-D0406 (FG1100-02) controls of up 4 sources and distributes audio to 6 rooms/zones.
- Delta Series Audio Controllers are available in 120V (DAS-D0404 & DAS-D0406), or 240V versions (DAS-DI0404 & DAS-DI0406).

FIG. 1 indicates the front and rear panel components on the Delta Controller.

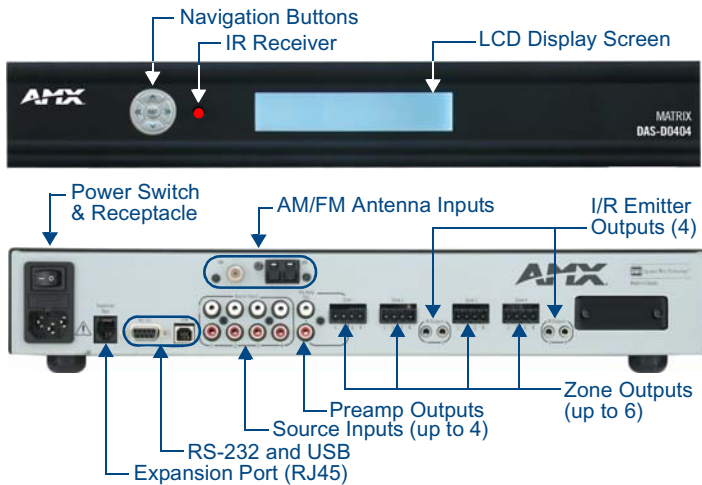


FIG. 1 Delta Controller Layout - Front and Rear Panel Details (DAS-D0404 shown)

Delta Series Product Specifications	
Models Available:	<ul style="list-style-type: none"> • DAS-D(I)0404 4 Source, 4 Zone Controller • DAS-D(I)0406 4 Source, 6 Zone Controller
Stereo Output:	25 Watts/CH stereo (20Hz to 20Khz @ .1% THD)
Power:	287W max (Actual average usage = 120W)
Front Panel Components:	
• Navigation Array Buttons	Allow for front panel programming, selection of sources, and tuning AM/FM radio stations (when Delta is fitted with the optional tuner board). The same array appears on the Matrix KP-4e navigational keypad.
• IR Receiver	For the IR receiver. This is where you must aim the remotes from your audio source components so the Delta can learn and emulate those commands.
• LCD Display Screen	Displays information necessary during the programming steps and afterward is the display to indicate information about the source input and zone activity.
Rear Panel Components:	
• Power Switch & Receptacle	The master power switch will remain in the ON position normally.
• AM/FM Antenna Inputs	Connections for the AM and FM Antennas.
• I/R Outputs (4)	Four Infrared 3.5mm Emitter Output Jacks. Note: Be sure to connect the emitter to the same numbered port as the corresponding source input.
• Zone Outputs (up to 6)	Connections for zone outputs that connect to the keypads.

Delta Series Product Specifications (Cont.)

• RJ 45 Port	Ethernet Port for future expansion
• RS-232 and USB Ports	For firmware upgrades and interface with NetLinX control systems.
• Source Inputs (up to 4)	RCA connections for 2-channel audio input from up to 4 external sources (unless an AM/FM tuner board is present, which internally takes up the Source #1 location - then it's 3 additional sources).
• Preamp Outputs	RCA outputs to run an external amplifier. This is only available for Zone output #1.
Dimensions (HWD):	<i>Including feet and rear connectors:</i> <ul style="list-style-type: none"> • 3 1/16" x 17" x 13 1/2" • 7.68cm x 43.18cm x 33.52cm
Weight:	24.05 lbs (10.91 kg)

Connect the Source Units to Delta

1. Plug RCA audio cables from each source device into the labeled RCA jacks at the back of the Delta controller. Ensure that right and left are connected correctly.
2. Then connect the IR emitter leads for each audio source into the appropriate connector on the back of the Delta controller and run the optical end of the emitter lead to the source device's IR receiver window.
3. Attach the emitter by peeling and sticking the supplied adhesive patch on the emitter. If an on-board tuner is pre-installed into Delta, you must also connect AM and FM antennas as shown in FIG. 2.

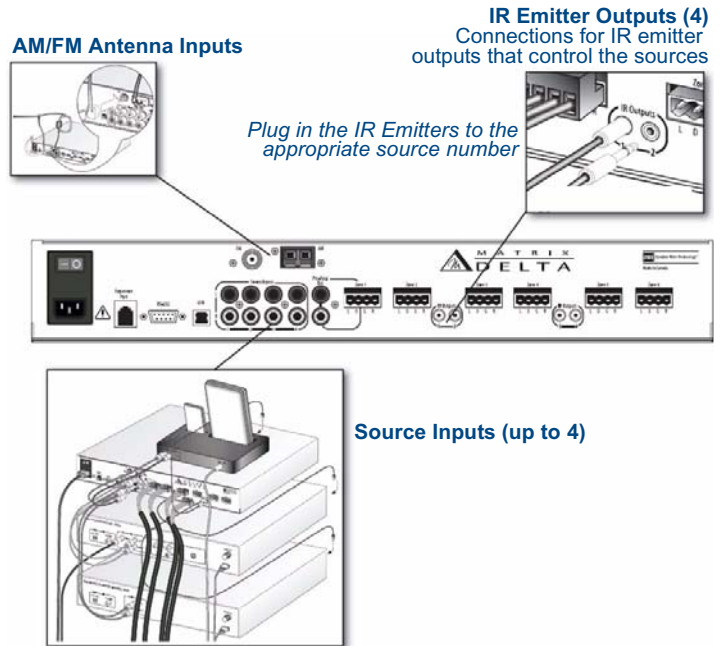


FIG. 2 Connect the Source Units to Delta

Source Inputs (up to 4)

RCA connections for 2-channel audio input from up to 4 external sources (unless an AM/FM tuner board is present, which internally takes up the Source #1 location - then it's 3 additional sources). FIG. 2 shows an example of a DVD player, CD player, and iPod docking device all connected to Delta. The fourth source is the internal AM/FM tuner.

Connect the Keypads to Delta

Looking at the rear of the keypad with the connectors at the bottom, you will see (2) plug type 4 pin receptacles. The connector on the right side terminates the 4 conductor wire from the Delta controller and the connector on the left side connects the audio to the speakers in the zone (FIG. 3).

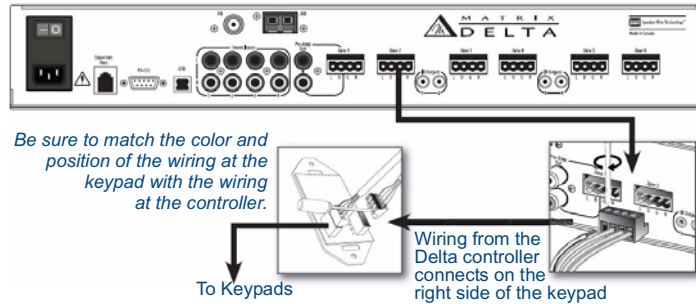


FIG. 3 Connect the Keypads to Delta

Note: Although speaker wire is commonly used, you can also use CAT-5 or other paired wiring.

Connect the Speakers to the Keypads

Speakers will be wired according to their positive and negative terminals, which are usually Red and Black for each speaker. Once installed in their locations, the speaker wiring is typically run to the keypad location and is connected into the connector on the left side of the keypad.

Repeat this for each zone in the system (up to six).

Note: There are alternative connection schemes for speakers directly to Delta or via external amplifier. Refer to the Delta Series Audio Controllers Operation/Reference Guide for details.

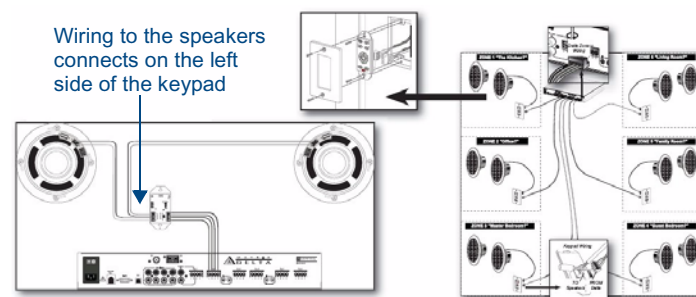


FIG. 4 Connect the Keypads to Delta

Please see the complete Delta Installation Manual for details.

Power Up and Test the Basic System Operation

Make sure the Delta controller is plugged into the wall and the power switch on the back panel is in the ON position. The Delta system should now be ready for initial testing.

To test the system connections, activate one source from a keypad. Begin by manually activating one of the available audio sources such as the tuner and move through each zone and test that keypads respond to the on/off, volume, and tone control commands and that the source can be heard in all zones on both speakers.

Note: We assume the programming has not yet taken place.

The basic functionality of the Delta controller (which means turning Delta on/off, volume up/down and treble/bass/balance) are functions that can be performed without programming (FIG. 5).

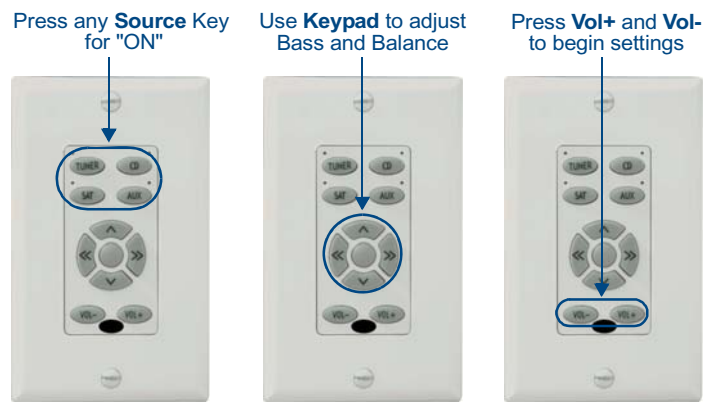


FIG. 5 Power Up and Test the Basic System Operation

If a tuner module has been installed, all of the basic tuner operations will also be able to function without any programming so you will have sound for a test signal right away.

The IR repeaters must be installed and basic source component commands must be programmed to select and/or control any external sources however. Until then, you will have to manually turn on and start the external source component if used as a test source!

Turning a Zone ON

Pressing the Source key turns the system on in the room you are in and also turns that source on if it has not been previously selected in another zone. The indicator next to the source will light Red. Through Matrix's own Dynamic Macro process, sources that are muted or paused will be turned off after they are idle (not selected in any zone) for ten minutes.

Press the active source button again to turn the zone off.

Volume Control

Control of the system volume is very intuitive because of discrete buttons for the Volume UP and Volume DOWN command. When increasing or decreasing volume, the progression is in 3dB steps when the volume is half (of maximum) or below. Above the halfway point, the progression drops to 1dB steps so you can fine tune the adjustment without worry of over-driving speakers by surprise.

Tone Control

The tone control mode allows the user to adjust Bass, Treble, and Balance on a "per zone" basis.

To enter tone control mode, press VOL UP & VOL DOWN buttons simultaneously until LED's begin to cycle in a counter-clockwise motion.

This will enable the BASS and BALANCE settings first. At any time during adjustments, If you want to return the settings to default, press and hold the center keypad navigation button. When you are satisfied with your adjustment, press (but not hold) the center keypad navigation button to save the bass and balance adjustment. This will take you to the treble and balance adjustment mode.

Once again, once adjustments are complete, press (but not hold) the center keypad navigation button to return to normal operation mode.

Additional Information

Refer to the Delta Series Audio Controllers Operation/Reference Guide and Quick Start Guide (available online at www.amx.com) for important safety instructions, additional product information, programming instructions, and detailed installation information.