

WHAT'S NEW 2021

RESIDENTIAL INNOVATIONS



INNOVATIONS

Beautiful Light, Intelligent Shades, and Harmonious Controls

continue to be some of the fastest growing categories in our industry. We are proud to say that our commitment to ingenuity, innovation, and creativity allows Lutron to keep pace with rapidly changing technology and increased customer demand. In collaboration with you, our loyal dealers, we continue to be able to provide stunning solutions for your projects and your clients.

Lutron understands that our customers require flexible and dynamic products that constantly and quickly evolve to meet the needs of a changing market. We also recognize that technology in the home has never been more important than it is today, inspiring us to continue innovating and expanding our range of solutions. As always, we strive to fulfill the demands of your most discerning clients by giving you the ability to create memorable experiences in these homes, from anywhere at any time.

World-class quality is what you know and count on from Lutron, and we proudly deliver on that expectation. We are focused on product innovation, and we strive to continually improve our electronic tools, communication pathways, and premium customer services. The engineering and innovation train at Lutron has never moved faster, and we are excited to share all the enhancements we have made to the Residential Luxury portfolio in the last twelve months.

Let's build the future together.



CONTENTS

ALWAYS INNOVATING

- 6 RadioRA 3 Connected Lighting Control System
- 8 Sunnata RF Keypads, Dimmers, and Switches
- 10 Palladiom Wire-Free Shading System
- 12 The Lutron Intelligent Light Portfolio
- 14 Ketra LS0 Lightbar Slim

BEAUTIFUL LIGHT

- 18 Ivalo Finiré 3" and Finiré Prime
- 19 Ketra S30 Downlight Trim
- 19 Ketra Ready

INTELLIGENT SHADES

- 22 Atelier Collection Fabric Additions
- 23 Triathlon Wood Blinds with Natural Light Optimization

HARMONIOUS CONTROLS

- 26 Alisse Wall Control
- 27 HomeWorks Digital Power Module
- 27 HomeWorks LEAP Integration
- 28 DIN Retrofit Subplate for RPM Panels
- 29 120V DIN Rail Feed-Through Panels
- 29 The Lutron App — New Updates
- 30 Lutron Designer
- 31 Josh.ai Ready Wallplates
- 32 Caséta Outdoor Smart Plug

DIGITAL TOOLS

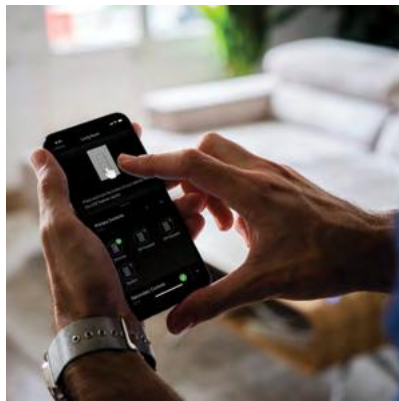
- 36 Bluebeam & AutoCAD Tool Sets
- 37 myLutron Suite of Tools
- 38 Lutron Luxury Website



ALWAYS
INNOVATING



ALWAYS INNOVATING



NEW

RADIORA 3 CONNECTED LIGHTING CONTROL SYSTEM

What does the system do?

The RadioRA 3 connected lighting control system is an intelligent and easy-to-use wireless lighting solution enabling you to delight homeowners by creating the ultimate comfort zone through lighting control — with just the touch of a button or the call of their voice.

The RadioRA 3 connected lighting control system allows homeowners to control both interior and exterior home lighting, as well as electric and natural light. It integrates with lights, shades, music, and more.

The all-in-one processor streamlines installation. Plus, the simplified PC programming software allows for convenient, app-based control and activation and enables installers to service RadioRA 3 systems remotely, eliminating a trip to the job site.

How will this solution help my business?

Delight your clients with sleek, elegant controls that complement any decor or design scheme. The new Sunnata RF controls also offer a full range of connected products in versatile and appealing new colors.

Streamline projects with the RadioRA 3 lighting solution's new, all-in-one processor. Powered by Power over Ethernet (PoE), the RadioRA 3 processor can be installed centrally in the home — bypassing the need for a nearby power receptacle.



What are the features and benefits?

- **Simply beautiful:** RadioRA 3 system brings a contemporary light bar design to a full range of new Sunnata RF controls: dimmers with PRO LED+ advanced technology, switches, and custom keypads available in 2-, 3- and 4-button configurations.



- **Color for every design:** Delight your clients with the elegant Sunnata RF controls, available in 24 gloss and satin finish options, including 14 refreshed colors with satin finish.

- **Easier to install:** RadioRA 3 system is powered by a new all-in-one processor that controls 200 Lutron devices, features ultra-fast and reliable Clear Connect RF technology, and is backwards compatible with RadioRA 2 and RA2 Select systems.



- **Simpler to program and customize:** With the new, simplified PC software, programming across devices has never been easier. Reduce data entry by applying programming across devices with one click, and enjoy app-based editing and new remote service features to get you on and off the job faster.
- **Streamlined integration:** RadioRA 3 system comes with Lutron LEAP API, which embeds system programming directly in the top control brands' design software, saving you hours of valuable programming time.

Available to ship Q1 2022

ALWAYS INNOVATING



NEW

SUNNATA RF KEYPADS, DIMMERS, AND SWITCHES

What does it do?

Perfect for both new construction or retrofit applications, Sunnata RF controls are a new line of designer wall controls exclusively available in the RadioRA 3 and HomeWorks systems. Each unit offers an elegant look with a crisp, clean, white light bar featuring a soft glow allowing the user to easily find the control in the dark and immediately understand the device status.

How will this solution help my business?

Deliver beauty, sophistication, and convenience — all in one turnkey offering. The Sunnata RF controls can be easily installed into any home thanks to the built-in Clear Connect Wireless technology. This solution enhances the RadioRA 3 and HomeWorks systems with yet another beautiful aesthetic to offer the client.

Brilliant White	Glacier White	Architectural White	Lunar Gray
Pumice	Sand	Sage	Clay
Pebble	Cobblestone	Slate	Espresso
Truffle	Deep Sea		



What are the features and benefits?

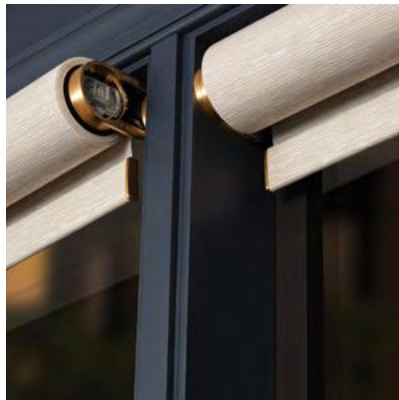
- **Advanced dimming.** Sunnata RF dimmers utilize LED+ and RTISS technology* to bring the latest dimming technology to any wallbox.
- **Intuitive control.** Capacitive touch light bar on the Sunnata RF dimmer provides intuitive and elegant control of practically any light source.
- **Powerful versatility.** Sunnata RF switch offers the ability to switch any non-dimmed light or motor loads (like exhaust fans), making it the perfect complement for the other Sunnata controls.
- **Multi-location convenience.** Add up to four companion dimmers or switches per circuit.

- **Easy-to-access programming.** Sunnata RF keypads match the load controls perfectly, while allowing the user access to the powerful, custom programming. Each button can be personalized with text or icons.
- **Flexible configurations.** Choose from a 2-, 4- or 3-button with raise and lower configuration.
- **Easy ordering.** Enjoy a simple ordering process with Sunnata RF controls for RadioRA 3 and HomeWorks systems with bill-of-materials and button personalization through Lutron Designer and myProjects.

Available to ship Q1 2022

*RTISS technology is available only in Sunnata RF dimmers for the HomeWorks system

ALWAYS INNOVATING



NEW

PALLADIOM WIRE-FREE SHADING SYSTEM

What does it do?

The Palladiom Wire-Free Shading System offers simple, wire-free installation and automatic, intuitive interior lighting optimization. Combining sophisticated technology and a simple user experience, the system extends automated shade controls to more spaces, with greater success—and less effort.

How will this solution help my business?

The system is simple to design and easy to add to any project, at any time. With no pre-wiring required, bring the system into any space where window treatments are desired after the walls are already closed. With this solution, don't worry about a pocket, fascia, or custom top treatment—there's nothing to hide.

What are the features and benefits?

- **Innovative technology.** Powered by patent-pending, Lutron Active Energy Optimization, the system combines alkaline and lithium batteries to achieve an industry-leading, three-to-five-year battery life using 60% fewer batteries than other Lutron shades.
- **Simple to install and maintain.** No pre-wiring or pre-built recessed pockets necessary. The solution brings wire-free shading to more architectural conditions, homes, and spaces, for windows up to 12' wide and tall.
- **Design flexibility.** Choose from a variety of form factors including wall-, ceiling-, and jamb-mount with end and center bracket options. All variations feature a simple slide mechanism, enabling easy battery changes without shade removal.



- **Beautiful from every angle.** Purposefully designed, the solution hides everything but the shade itself—including the RF antenna, programming buttons, LED indicator lights, and battery-change mechanism.
- **Effortless compatibility.** Pair the solution with a range of Lutron home automation systems, including the next generation of HomeWorks, RA2 Select, and Caséta Pro.

Available to ship Q1 2022

Pure White	Black Anodized	Clear Anodized	Satin Nickel
Brass	Satin Graphite	Opal White	Palladiom shading system bracket finishes

ALWAYS INNOVATING



UPDATED
Ivalo Finiré 3"
and Finiré Prime



NEW
Ketra LS0
Lightbar Slim



NEW
Ketra S30
Downlight Trim

THE LUTRON INTELLIGENT LIGHT PORTFOLIO

The Lutron Intelligent Light Portfolio offers a complete lighting solution, integrated by design, coming from a brand you know.

Our growing portfolio includes Ketra D3, LS0 Lightbar Slim, S30 Downlight Trim, Ketra Ready, and enhancements to the Ivalo Finire 3" and Prime luminaires.

High performance

- 0.1% dimming
- 90+ CRI across static white, warm dim and full spectrum
- Wired and wireless communication
- Reliable components

Intelligent

- Digitally addressable wired and wireless solutions
- Rapid and simultaneous button response
- Time clocks and voice commands via 3rd-party systems
- Designed, programmed and controlled in HomeWorks
- Highest quality, system-matched lighting experience across every source

Dynamic

- Cloud-based QSX processors continuously and automatically update your system with innovative new features and capabilities
- Customizable shows, programmable to change throughout the day via conditional logic
- "Vibrancy" mode enhances materials and art
- Dimmable XY color points

How will this solution help my business?

Expand your business with the Lutron Intelligent Light Portfolio by offering a flexible and simple solution you feel confident offering to your most discerning clients.

Flexibility — Lutron offers Type X wired and wireless solutions that work for your needs today, and can be easily adapted for tomorrow's project changes.

Simplicity — Utilize your existing Lutron product knowledge, as well as the same tools you use today, to streamline your design and programming time on a project.

Innovation — We continuously invest in our Intelligent Light Portfolio to bring you the most advanced and competitive solutions available.

Range — Choose from a wide selection of price points, lead times, and product breadth.

COMPLETE BREADTH OF LINE FOR ANY SPACE IN ANY JOB

Downlights



Ketra
D3 Downlight



Ketra D4R
Retrofit Downlight



Ivalo
Finiré 3"



Ivalo
Finiré Prime

Linears



Ketra
G2 Linear



Ketra LS0
Lightbar Slim



Ivalo
Lumaris Linear

Lamps



Ketra
S38 Lamp



Ketra
S30 Lamp



Ketra
A20 Lamp

Lamp Solutions



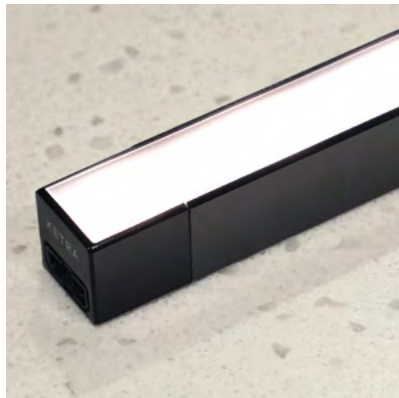
Ketra S30
Track Luminaire



Ketra S30
Downlight Trim

KETRA
R E A D Y

ALWAYS INNOVATING



NEW

KETRA LS0 LIGHTBAR SLIM

What does it do?

The newest and slimmest Ketra luminaire now allows you to add Ketra in places you could not before, creating even more immersive lighting experiences for your client.

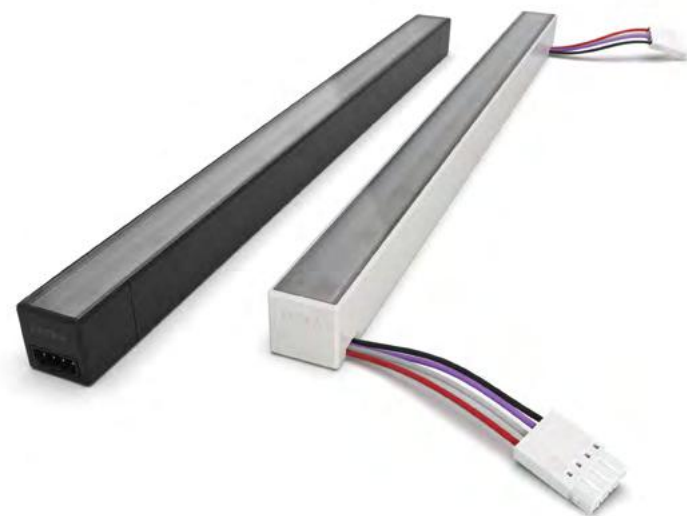
How will this solution help my business?

Ketra LS0 Lightbar Slim is simple, easy to program and easy to use. This is the smallest Ketra form factor to date, enabling you to add Ketra to more spaces on your projects.

What are the features and benefits?

- **Stylish and flexible.** This slim, modular linear is available in two widths, with multiple lens options.
- **Custom sizing.** Available to order in 1" increments, from 10" to 96" in one extrusion, either white or black.
- **Streamlined and simple.** The X96 controller has a small footprint and conveniently installs onto a standard, dual-gang junction box.

Available to ship Q4 2021



BEAUTIFUL LIGHT

Make every experience better and enhance every project with the Lutron portfolio of luminaires and lamp solutions.



WHAT'S NEW IN LIGHTING



HALO FINIRÉ 3" & FINIRÉ PRIME

What does it do?

Deliver high quality at lower cost. These architectural-grade downlights offer enhanced features that will allow you to sell more luminaires on every job.



How will this solution help my business?

Now integrated into the entire Lutron portfolio of residential products, these fixtures allow you to sell a high-performance, architectural-grade downlight with a broad range of trim and ceiling aesthetics to fit any design.

What are the features and benefits?

- 0.1% dimming
- Digitally addressable
- Wired Type X communication
- Static white, warm dim options
- Customizable trim styles and lens options for every ceiling type
- New starting price points
- Finiré Prime is available with a quick-ship housing: 2-day lead time

Additionally, Lutron is offering system coordinated warm dimming curves.

Finiré 3" and Finiré Prime warm dimming curves will be loaded into the Lutron Designer software. The result? Easy mixing of Ketra linears and lamps in the same spaces.

Available Now

KETRA S30 DOWNLIGHT TRIM

What does it do?

Introducing a purpose-built solution for the S30 lamp. The Ketra S30 Downlight Trim uses the same materials as other downlights in the Lutron portfolio. Enjoy coordinated trim colors for a coordinated aesthetic.



How will this solution help my business?

Now you can add Ketra to more projects. The Ketra S30 Downlight Trim is a lower cost solution that allows you to coordinate trim aesthetics in the ceiling, while providing all the benefits of the renowned Ketra light source. Streamline the ordering process by procuring the entire solution from a single manufacturer — no need to use different tools from multiple sources.

What are the features and benefits?

- **Perfect fit.** The new downlight trim fits into a Halo 5" housing and features a 1" regressed bevel to a 4" aperture for the S30 lamp to fit into perfectly.
- **Easy ordering.** Lutron-qualified dealers will be able to source the Ketra S30 lamp, bespoke trim, and Halo 5" housing all directly from Lutron.

Available Now

KETRA READY

What does it do?

Ketra Ready is where beautiful light meets elegant design by putting a curated selection of Ketra-compatible fixtures from leading lighting designers at your fingertips.

How will this solution help my business?

You can assist your specifiers in the decorative fixture process by offering an at-the-ready solution from a curated group of manufacturers. Each fixture works with Ketra lamps to create immersive lighting experiences for your clients.

What are the features and benefits?

- Luxury designs from leading lighting designers. Participating manufacturers include Ango, David Trubridge, Lumetta, Remains Lighting, Stephen Pikus, and Vibia.

KETRA R E A D Y

INTELLIGENT SHADES

Elevate every project with intelligent shades designed to help you achieve the perfect balance between inside and out.



WHAT'S NEW IN SHADING



ATELIER COLLECTION FABRIC ADDITIONS

What does it do?

Now there are four new fabric families available in the Atelier Collection — an expanded selection of unique textures within the neutral color palette and design-focused spirit of the offering.

How will this solution help my business?

With an even greater range of fabric options at your fingertips you're all the more equipped to sync with the design aesthetics and preferences of your most discerning customers.

What are the features and benefits?

- **Tela and Tela Blackout.** Fabrics feature a linen texture and incorporate multiple yarn colors to create a soft color palette complementing the material's texture.



- **Roseau and Roseau Blackout.** Fabrics feature a natural look, reminiscent of reeds, with an emphasized horizontal pattern and a wide range of available color options.

All new fabrics are available up to 116" wide.

Configured shades are available now to quote and order in myProjects. Individual samples are also available to order on Lutronfabrics.com.

TRIATHLON WOOD BLINDS WITH NATURAL LIGHT OPTIMIZATION

What does it do?

Triathlon battery-powered wood blinds offer the opportunity to add simple control of natural light with a style that complements every aesthetic, but without the challenge of running wires.

For small projects where RA2 Select or Caséta systems are the right fit, simply enable Natural Light Optimization, which automatically tilts blinds to preset angles throughout the day. Natural Light Optimization lets indirect light in, but keeps harsh glare and UV rays at bay.

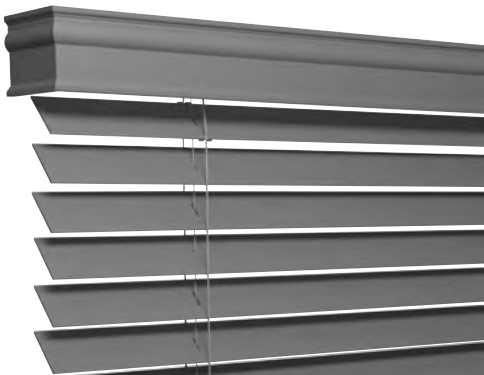
How will this solution help my business?

Many homeowners leave wood blind slats in one position, rather than deal with the hassle of adjusting them.

Now for renovations to existing homes, you can offer your clients the simplicity of wire-free automated blinds, in a style that complements a traditional home aesthetic.

What are the features and benefits?

- **Whisper-quiet.** Enjoy ultra-quiet motion and precision-tilt positioning technology.
- **Proven reliability.** Lutron Clear Connect wireless technology powers this solution.
- **Flexible sizing.** Sizes are available as wide as 72" and as tall as 72" for a single blind, with the option to group blinds under one valance up to 96" wide.



- **Versatile aesthetic.** Hand-crafted from genuine North American Basswood, the solution's 2" wood slats are available in twelve stained and six painted finishes to complement any interior.
- **Wired and wire-free options.** Control options include battery-powered, 12V wired, or manual tilt (includes a wand).
- **Made compatible.** This solution works with Caséta, RA2 Select, and HomeWorks systems with QSX processors.

Note: Natural Light Optimization is currently only available with Caséta and RA2 Select systems. Triathlon wood blinds are not compatible with HomeWorks QS or RadioRA 2 systems at this time.

Available Now

HARMONIOUS CONTROLS

Magic starts with the touch of a button. Give your clients simple, easy control of their homes.



WHAT'S NEW IN CONTROLS HOMEWORKS



ALISSE WALL CONTROL

What does it do?

Elegant simplicity. The Alisse wall control delivers magical lighting experiences at the touch of a button. Combining unparalleled function with European-inspired form, the Alisse wall control is available in a range of finishes and multiple button configurations.

How will this solution help my business?

Impress clients with the inviting, approachable form of the Alisse wall control, machined from solid brass and finished by hand. The design-forward wall control is configured specifically to your design spec and works seamlessly with the next generation of HomeWorks, using a QSX Processor.

What are the features and benefits?

- **Endless versatility.** The balanced, versatile design allows for single-, double-, and triple-column controls that all mount to the same backbox.
- **Personalization.** Clear and precise engraving with contrasting backfill for easy-to-read inscription.
- **LED indicators.** A LED halo around the button indicates status, while the LED color temperature coordinates with the wall control finish.
- **Precious metals.** Alisse wall controls are available in a range of handcrafted metal finishes and painted metals to complement virtually any interior.
- **Smart installation.** The two-piece design lets you install the base unit prior to selecting a wall control finish and engraving. The base unit offers the ability to verify a certificate of occupancy prior to the front-end install.
- **HomeWorks compatibility.** The Alisse wall control is compatible with HomeWorks QSX processors using a QS wired link.

Available Now

HOMEWORKS DIGITAL POWER MODULE

What does it do?

The HomeWorks Digital Power Module allows for seamless control of HomeWorks digital fixtures, such as Finiré downlights and Lumaris linear lighting, including the ability to dim down to 0.1%.



How will this solution help my business?

By empowering you to offer compatible, high performance HomeWorks digital fixtures on your projects, the HomeWorks Digital Power Module enables you to grow your Lutron business while reducing risk and cost.

What are the features and benefits?

- **Power at scale.** Supports up to 128 wired, digitally addressable Lutron luminaires per module (Ivalo Lumaris, Finiré 3", and Finiré Prime luminaires).
- **Flexible zoning.** Go from 1 to 128 zones per module, right within the HomeWorks software.
- **Easy integration.** Connects to the QS wired link for simple integration into a HomeWorks QSX system.
- **Built-in testing.** Supports both software and onboard test functions to help to verify correct wiring and addressing.

Available Now

HOMEWORKS LEAP INTEGRATION

What does it do?

Lutron Extensible Application Protocol (LEAP) is a powerful, modern, and secure integration protocol that allows for dynamic control and monitoring of the Lutron system from a large variety of industry-leading control platforms.



How will this solution help my business?

LEAP connects Lutron to other control system brands with native, seamless integration. With LEAP, a 3rd-party system has the ability to automatically extract the Lutron system configuration information directly from the Lutron processor, allowing it to import items such as area trees, zone names, control station names, and button engravings. Use this protocol to reduce labor time and mistakes, while delivering a secure solution for your clients.

What are the features and benefits?

- **3rd-party alliances.** Enables integration with best-in-class brands including Savant, Kaleidescape, Josh.ai and more.
- **Simple and seamless.** 3rd-party alliances can easily import the Lutron system configuration for fast and convenient setup.

Available Now

WHAT'S NEW IN CONTROLS HOMEWORKS



DIN RETROFIT SUBPLATE FOR REMOTE POWER MODULE (RPM) PANELS

What does it do?

The RPM to DIN Subplate enables you to retrofit cutting-edge HomeWorks DIN rail modules with ease. Transform outdated dimming and switching controls in any 8-module RPM panel while allowing the wiring to remain intact.

How will this solution help my business?

Upgrade older RPM projects without reinventing the wheel. The RPM to DIN Subplate allows you to upgrade a home's existing infrastructure to the HomeWorks System with QSX processors, illuminating new pathways into modern controls, lighting, dimming, and shading.

What are the features and benefits?

- **Transformational ease.** Mount up to eight DIN rail modules into breaker or feed-through panels.
- **Lutron longevity.** A newly-designed panel cover maximizes thermal management and preserves the module's warranty—keeping quality high and safety at the forefront.
- **One-stop management.** The new DIN Retrofit Subplate includes everything you need to ensure success: a QS communication harness, wire landing board, and ground terminal blocks for simple wire management.

Available to ship Q4 2021

120V DIN RAIL FEED- THROUGH PANELS WITH TERMINAL BLOCKS

What does it do?

Available in multiple configurations, these DIN panels boast a set of terminal blocks for landing line and load side wiring for the DIN modules, providing for easy prewiring and testing.

How will this solution help my business?

The DIN panels bridge the gap between legacy technology and modern innovations in lighting. Expand your horizons and impress your clients with seamlessly blended analog and digital lighting controls—all at home in one panel.

What are the features and benefits?

- **Gold-standard connectivity.** The panels contain terminal blocks equipped to handle any standard line and load wiring.
- **Broad compatibility.** With 2-, 4-, 6-, 8-, and 10-module configurations available, you can bring any lighting system up to speed.
- **A perfect fit.** These panels feature a shallower depth than older models for a flush mount into the stud bay.
- **Effortless simplicity.** The unit includes a QS communication harness and wire landing board for simple wire management.

Available to ship Q4 2021

THE LUTRON APP NEW UPDATES

What does it do?

The most recent version of the Lutron App puts powerful new features in the hands of HomeWorks system installers and homeowners, from direct warm dimming to time clock functionality.



How will this solution help my business?

New features in the Lutron App provide users with the ability to adjust, customize, and program their environment to a whole new level of personalization, right on their smartphone.

What are the features and benefits?

- **Warm dimming.** Enable warm dim capabilities directly from the Lutron App.
- **Robust time clock.** Enjoy additional time clock functionality, including start and end dates, recurrences, exceptions, groups, and more.
- **HVAC control (Coming Q1 2022).** Ability to control HVAC directly in the app.

Available Now

WHAT'S NEW IN CONTROLS HOMEWORKS



LUTRON DESIGNER

What does it do?

Enhanced with new cloud-based capabilities, Lutron Designer software is a powerful lighting control platform that now gives you the ability to service projects and program systems with QSX processors from anywhere in the world, at any time.

How will this solution help my business?

Drive significant time and cost savings through remote servicing capabilities. Eliminate unnecessary site visits, enable remote database transfers, and facilitate remote diagnostics—all with a single software program.

What are the features and benefits?

- **Faster service.** Improved ability to quickly service existing projects by sharing cloud database back-ups with different users within the same company.
- **Highly secure.** Never lose a project file— the latest database will always be securely backed up in the cloud.
- **Always up-to-date.** Access to the most current homeowner edits and the ability to restore projects from previous revisions.
- **Extended compatibility.** Available for HomeWorks systems with QSX processors and Lutron Designer version 21.3 or later.

Available Now

JOSH.AI READY WALLPLATES

What does it do?

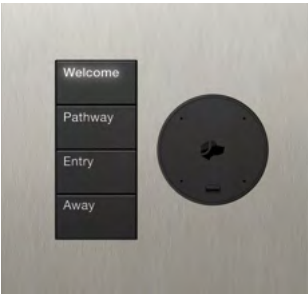
Josh.ai Ready wallplates pair Lutron Palladiom or seeTouch keypads with Josh Nano, an architectural microphone. The result is a voice-enabled solution that's simple, flexible, and powered by a harmonious interface ideal for all luxury projects.

How will this solution help my business?

Now you can offer customers a control station that makes the most-used scenes accessible at the touch of a button. It also provides endless possibilities when controlling lights and shades by voice, in addition to offering luxury homeowners a solution that's as innovative as it is aesthetically pleasing.

What are the features and benefits?

- **Seamless integration.** Compatible with Lutron Palladiom, seeTouch and Pico keypads, Josh.ai Ready wallplates are an effortless addition to sophisticated luxury lighting solutions.
- **Visually appealing.** Josh.ai Ready wallplates are available in multiple metal and plastic finishes, designed to complement most interior design schemes.



Available to ship Q4 2021



WHAT'S NEW IN CONTROLS CASÉTA



NEW
Coming Q2 2022 for
RadioRA 3 and
HomeWorks systems

CASÉTA OUTDOOR SMART PLUG

What does it do?

The new Caséta Outdoor Smart Plug is ideal for smart, seamless control of plugged-in outdoor string lights, holiday lights, landscape lights (15A loads), or small motors and pumps (up to ½ HP).

With just a touch of a button on the Lutron App or Pico remote, homeowners enjoy convenient control of the Caséta Outdoor Smart Plug—no matter where they are. Unlike traditional timers, the Caséta Outdoor Smart Plug, with a Caséta Smart Bridge, stays on the right time year-round, even with Daylight Saving Time and changing seasons.



How will this solution help my business?

The Caséta Outdoor Smart Plug is manufactured with solid-core construction that is built to last, and protects the device's inner electronics against even the most severe rainfall, dust, and dirt, season after season. With the new plug, Caséta helps bring the benefits of smart-home control outdoors. Adding a Caséta Outdoor Smart Plug, 2-Button Pico remote, and Caséta Smart Bridge to any job is a quick and easy way to add value on any project.



What are the features and benefits?

- **Optimal performance.** The Caséta Outdoor Smart Plug turns outdoor lights and other loads on/off: 15A lighting loads, 1/2 HP motor loads, 1200 VA(8A) for MLV loads.
- **Superior durability.** The black, polycarbonate body is built for long-term UV and temperature resistance with dual cords to seal water out.
- **Built to last.** The plug's solid polymer core provides optimal protection for internal electronics.
- **Withstands the elements.** With its IP-66 rating, Caséta Outdoor Smart Plug is impervious to dust and other foreign bodies, and designed to withstand severe rainfall. It also weathers extreme temperatures, from -4 °F to 122 °F (-20 °C to 50 °C).

- **Easy to use.** Just plug it into any GFCI outlet.
- **Enhanced control.** Schedule the Caséta Outdoor Smart Plug with changing seasons and sunrise or sunset via the free Lutron App.
- **Compatible with Ring.** Coordinate your smart plug with Ring to turn on your lights if it detects motion or if someone arrives at your front door.*

*Smart Bridge (L-BDG2-WH) required for scheduling and Works with Ring

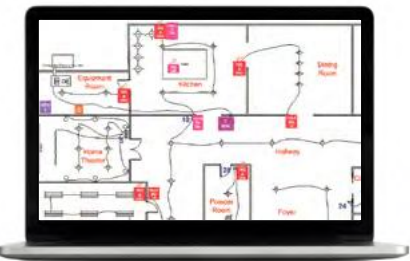
Available Now in Caséta systems

DIGITAL TOOLS

Integrated by design, Lutron solutions and tools work together effortlessly to create a seamless experience from design to programming.



WHAT'S NEW IN DIGITAL TOOLS



BLUEBEAM & AUTOCAD TOOLSETS AND REVIT FILES

What does it do?

The AutoCAD and Bluebeam toolsets allow the user to place Lutron product symbols onto any floor plan and export a .csv file that can be easily imported into the Lutron myProjects software. These toolsets reduce duplication efforts and lower the opportunity for error.

Taking it one step further, the Lutron Designer software can import myProjects files for a seamless, connected workflow solution that begins with the initial spec and ends with a fully programmed system.

How will this solution help my business?

These tools allow a dealer, architect, designer, or rep to add Lutron system components into their AutoCAD or Bluebeam files to quickly create a system layout and bill of materials. These tools increase specification accuracy while saving a significant amount of time on each project, driving sales growth.

What are the features and benefits?

- **Heightened awareness.** Alert architects and designers in your area to these innovative new tools while expanding your efforts—and surrounding every job with a Lutron spec.
- **Empower the specification community.** Advanced digital drawing tools in industry-standard formats are now easily accessible.
- **Improved shade and Ketra symbols.** Allow for easy specification of Ketra and shading solutions, eliminating manual effort.
- **Enhance efficiency and organization.** Enjoy a more effective and organized area tree that can be pulled into the Lutron Designer software for larger projects.

Toolsets, application notes, and how-to videos are available on Lutron.com, Ketra.com, and Luxury.Lutron.com.

Available Now

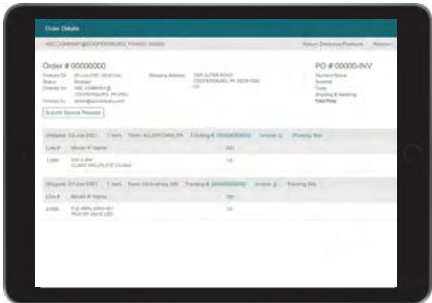
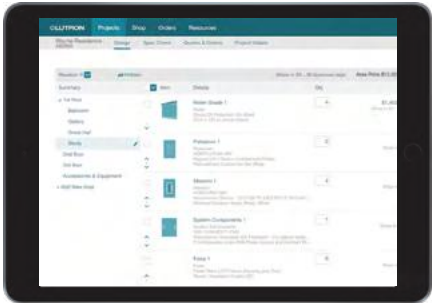
MYLUTRON SUITE OF TOOLS

What does it do?

With the myLutron suite of tools dealers can leverage a set of connected tools to help them more easily manage their business relationships, service their technical needs, and complete their projects with Lutron.

How will this solution help my business?

By streamlining processes, enhancing communication, and improving visibility for all roles throughout the dealership, these tools make it easier and more profitable to do business with Lutron.



What are the features and benefits?

- **Centralized resources.** myResources offers one-stop access to all collateral needed to educate, sell, market, specify, and design Lutron systems.
- **Streamlined organizational tools.** The myBusiness feature includes business and operations management tools that allow you to effortlessly track your Lutron program, sales, project pipeline, marketing funds, credit balance, and more.
- **Enhanced efficiency.** With myProjects and myOrders, dealers can quickly and easily:
 - Design, quote, order, and track all Lutron products
 - Configure and order all products including Ketra solutions, shades, and HomeWorks, RadioRA 3, RadioRA 2, and Caséta systems
 - Contractors can request electronic pricing from their distributor
 - Generate client proposals
- **Seamless workflow integration.** Streamline your workflow by importing your specification work (from AutoCAD and Bluebeam), designing your systems in myProjects, and letting that information flow seamlessly into the Lutron Designer versions 16.0 (or later) programming software.
- **Transparent communication.** Sign up for email notifications regarding the status of your open orders via the myOrders Digest.

Available Now

WHAT'S NEW IN DIGITAL TOOLS



LUTRON LUXURY WEBSITE

What does it do?

The differentiated, easy-to-navigate Lutron Luxury website was developed with the specifier in mind. It hosts categories of thoughtfully designed products, inspirational imagery, key tools for planning and specifying, and an intuitive mechanism for locating dealers.

How will this solution help my business?

The Lutron Luxury website is an online destination to access the complete residential luxury portfolio, making it easier for you to do business.

What are the features and benefits?

- **Optimal convenience.** All residential luxury products and color options are easily accessible.
- **Superior efficiency.** AutoCAD and Bluebeam toolsets can be downloaded straight from the site.
- **Enhanced connectivity.** Allows the end-user to effortlessly locate their local Lutron dealer.

Available Now: [Luxury.lutron.com](https://luxury.lutron.com)



[illegible]



© 12/2021 Lutron Electronics Co., Inc. | P/N 367-2808 REV E

Lutron, the Lutron logo, Active Energy Optimization, Alisse, Atelier, Caséta, Clear Connect, Finiré, Finiré Prime, HomeWorks, Ivalo, Natural Light Optimization, Palladiom, Pico, RA2 Select, RadioRA 3, RadioRA 2, seeTouch, Sunnata, and Triathlon are trademarks or registered trademarks of Lutron Electronics Co., Inc., in the U.S. and/or other countries.

Ketra is a trademark or registered trademark of Lutron Ketra LLC.

All other product logos, names, and brands are property of their respective owners.