



LUTRON BATTERY-POWERED WOOD BLINDS





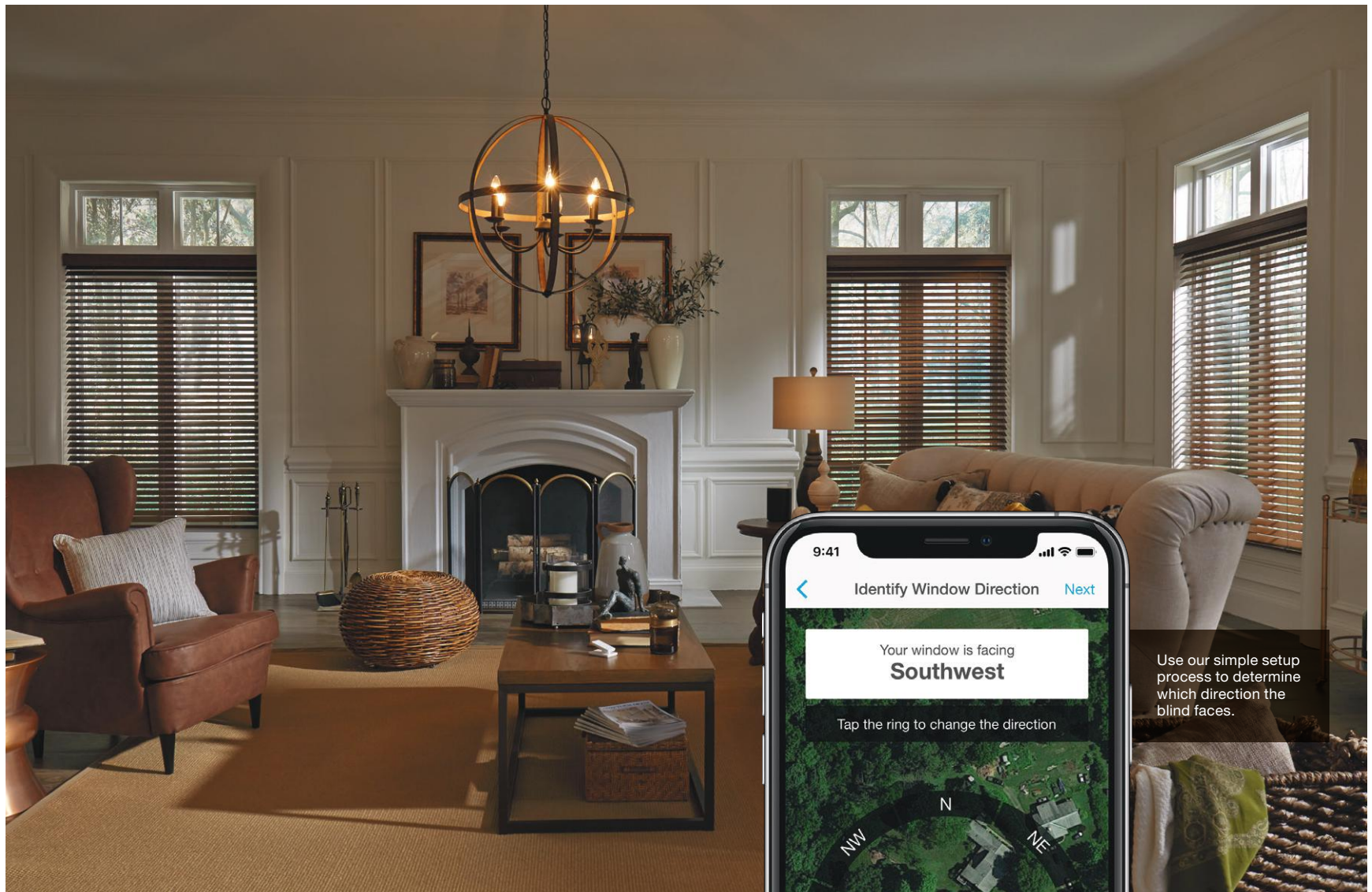
THE POWER OF NATURAL LIGHT

Wake up to a soothing, sun-filled room to set the tone for your day. As the light envelops your space, you feel energized and refreshed.

The reason? The transformative power of natural light.

Natural light can change the look of your space as well as the way you feel. So why not make the most of natural light — and give a warm and inviting feel throughout your home?

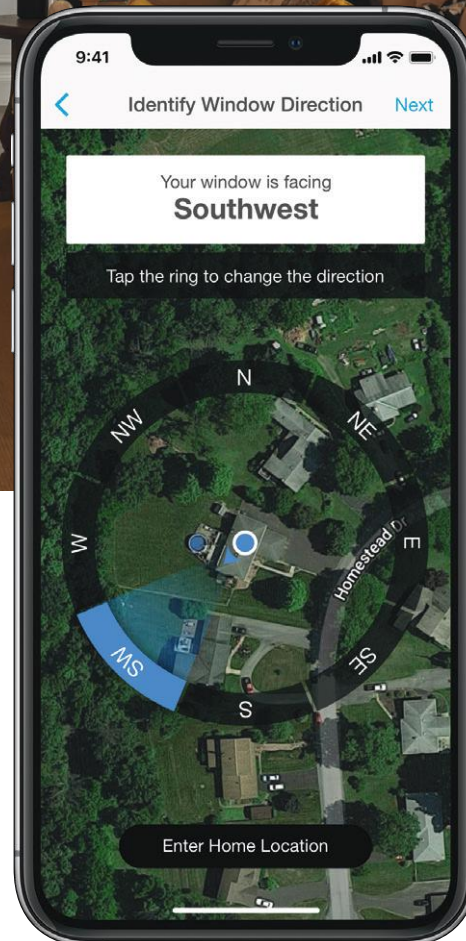
With Lutron wood blinds, you can.



NATURAL LIGHT OPTIMIZATION

Lutron wood blinds feature Natural Light Optimization. Using Lutron's app, you can enable this feature to automatically tilt blinds to preset angles throughout the day to diffuse direct sunlight and maximize comfortable daylight in any space. So you can let just the right amount of light in throughout the course of the day.*

*automated tilt only; manual lift



Use our simple setup process to determine which direction the blind faces.

After a quick setup using *Façade Finder*, blinds will run on a daily schedule customized to each day—you'll never have to worry about touching your blinds again.



REDUCE HARSH GLARE

As the sun rises, the intensity of its light streaming through the eastern façade of your home can be uncomfortable. When you enable the Natural Light Optimization feature in the Lutron App, blinds on the eastern facing side of your home tilt to minimize direct glare from the sun.

At the same time, blinds on all other sides of your home will shift to the *Max View* position to take advantage of natural light — preserving your view while the perfect amount of light envelops your space.

Blinds on eastern façade shown in *Fade Fighter* position



PROTECT YOUR FURNISHINGS

As the sun moves throughout the day, Lutron wood blinds adjust their tilt position to *Fade Fighter* to diffuse that direct sunlight. Lutron's intelligent technology protects floors, furniture, and artwork from harmful UV rays that can cause fading or discoloration from direct sunlight — with no effort required on your part. So you can focus on what really matters.

Blinds on southern façade shown in *Fade Fighter* position



ENJOY PEACE OF MIND

After dusk, all blinds quietly tilt closed, providing privacy and giving you peace of mind, creating the perfect atmosphere for relaxing.



SUPERIOR QUALITY

Lutron wood blinds blend seamlessly with your home's aesthetics. Hand-crafted from North American basswood, these blinds are a testament to quality and longevity.

Precision tilt positioning is a hallmark of Lutron wood blinds. Slats will always align across multiple blinds on the same wall, creating a uniform look.

BEST-IN-CLASS TECHNOLOGY

- Precision tilt positioning
- Ultra-reliable wireless communication
- Industry-leading battery life (with standard off-the-shelf batteries)
- Ultra-quiet motion
- Easily enable Natural Light Optimization feature in the Lutron App
- Add to your own customized scenes/schedules in the Lutron App
- Integrate with voice control
- Available in battery-powered, wired, or full manual options

ADDITIONAL PRODUCT FEATURES

- 2-inch slats
- Option to group blinds under one valance
- Hold-down brackets for door-mounted applications
- Customized wood blind Pico remote available (pictured at right)
- Carefully designed bottom bar for easy and precise manual lift — even for blinds up to 6' wide
- Child and pet friendly; no lift cords or wands with battery and wired options



Pico remote for wood blinds



FINISHES*

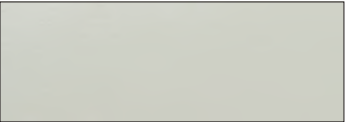
Painted Finishes



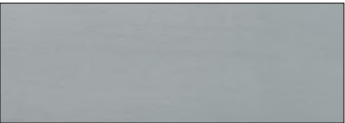
Arctic White



Soft White



Mist Grey



Stone Grey

Stained Finishes



Light Oak



Walnut



Red Mahogany



Dark Walnut

VALANCE STYLES*

Easton valance



Pictured in Stone Grey finish

Morgan valance



Pictured in Red Mahogany finish

*Slats and valances are made from real American basswood. Variations in texture, color, and appearance may occur. Valances are painted or stained to match the slat finish.



Scan to watch video



lutron.com/woodblinds | 24/7 customer support: 1.888.446.1503

The Lutron logo, Lutron, and Pico are trademarks or registered trademarks of Lutron Electronics Co., Inc., in the U.S. and/or other countries.

©2020 Lutron Electronics Co., Inc. | P/N: 367-2855 REV B