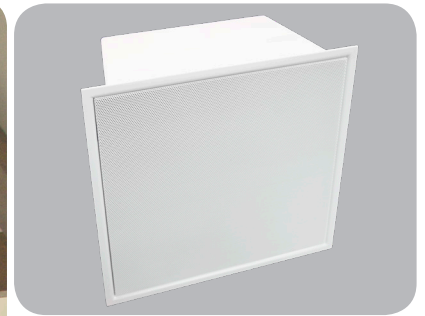


FXA550S CEILING SERIES

5 1/4" 3-WAY CEILING/SURROUND SPEAKER



Size	12.75 h x 12.75 w x 5.88 d (in) 324 h x 324 w x 149 d (mm)
Freq Response	65Hz-40kHz±3dB
Impedance	4 ohms
Sensitivity	89dB 2.83V /1m
Power req.	50-250 watts
Woofer	(2) 5 1/4" (133 mm) Aluminum
Midrange	(2) 3" (76 mm) High Excursion
Tweeter	(1) 1" (25 mm) Beryllium
Enclosure	Aluminum
Finishes	White Paintable Grille
PCB	FXA550S-PB

(2) 5 1/4" (133 mm) Aluminum Cone Woofers (2) 3" (76 mm) High Excursion Midranges (1) 1" (25 mm) Beryllium Tweeter

James Loudspeaker is dedicated to providing the optimal performance solution for any application. The FXA series introduces a new design concept to the James Loudspeaker lineup by offering a ceiling/in-wall solution for use in applications where coverage is a challenge. The FXA550S angled baffle loudspeaker was developed to provide high performance at an off-axis seating position while ensuring reduced reflections from the any adjacent boundary. The FXA550S is a full 3-way design in a FX style edge detail appearing virtually flush when installed.

The FXA550S makes an outstanding ceiling speaker for both LCR and surround applications as well as a great in-wall surround speaker, allowing downward coverage to adhere to many 3D immersive specifications such as Atmos, Auro3D and DTS:X. The FXA series also provides an ideal solution for additional rooms where speakers must be located off of the main listening area.

A beryllium tweeter provides the ultimate in high fidelity performance as well as timbre matches James BE Series models. Along with the BE tweeter, dual 3" high excursions mid-range transducers are mounted on the main baffle which is angled at 30 degrees towards the listening area. Dual 5.25" woofers are angled on the adjacent baffle at 20 degrees to provide full bass response.

All woofers are designed with aluminum cones, Santoprene surrounds and die cast baskets to be outdoor/marine ready. All enclosures are constructed with aircraft/marine 5052 aluminum and include aluminum white paintable grilles.

All units are assembled and tested in the USA, and guaranteed to give you that signature James sound. For outdoor and marine applications order the FXA550SM model (Marine upgrade includes titanium tweeter).

70V options and custom colors are available, contact James for information.

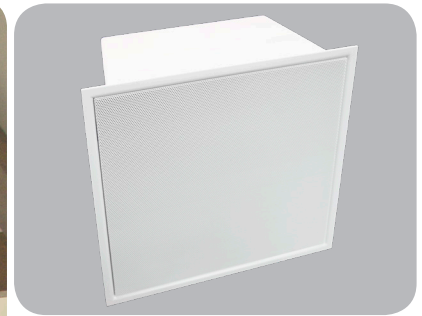
James
LOUDSPEAKER

2185 Park Place, Minden, NV 89423
Ph: 775.461.7500
www.jamesloudspeaker.com

DREAM IT! - WE CAN BUILD IT!

FXAQ550S CEILING SERIES

5 1/4" 3-WAY CEILING/SURROUND SPEAKER



- (2) 5 1/4" (133 mm) Aluminum Cone Woofers**
- (2) 3" (76 mm) High Excursion Midranges**
- (4) 0.75" (19mm) Aluminum Dome Quad-Array Tweeter**

James Loudspeaker is dedicated to providing the optimal performance solution for any application. The FXA series introduces a new design concept to the James Loudspeaker lineup by offering a ceiling/in-wall solution for use in applications where coverage is a challenge. The FXAQ550S angled baffle loudspeaker was developed to provide high performance at an off-axis seating position while ensuring reduced reflections from any adjacent boundary.

The FXAQ550S makes an outstanding ceiling speaker for both LCR and surround applications as well as a great in-wall surround speaker, allowing downward coverage to adhere to many 3D immersive specifications such as Atmos, Auro3D and DTS:X. The FXAQ series also provides an ideal solution for additional rooms where speakers must be located off of the main listening area.

The FXAQ550S is a full 3-way design in a FX style edge detail appearing virtually flush when installed. Utilizing four 0.75" aluminum dome tweeters, the James Quad Array Tweeter provides wide coverage and high output as well as timbre matches James QX and QXC models. Along with the Quad Array Tweeter, dual 3" high excursions mid-range transducers are mounted on the main baffle which is angled at 30 degrees towards the listening area. Dual 5.25" woofers are angled on the adjacent baffle at 20 degrees to provide full bass response.

All woofers are designed with aluminum cones, Santoprene™ surrounds and die cast baskets to be outdoor/marine ready. All enclosures are constructed with aircraft/marine 5052 aluminum and include aluminum white paintable grilles.

All units are assembled and tested in the USA and guaranteed to give you that signature James sound. For outdoor and marine applications order the FXAQ550SM model. 70V options and custom colors are available, contact James Loudspeaker for more information.

Size	12.75 h x 12.75 w x 5.88 d (in) 324 h x 324 w x 149 d (mm)
Freq Response	65Hz-24kHz±3dB
Impedance	4 ohms
Sensitivity	89dB 2.83V / 1m
Power req.	50-250 watts
Woofer	(2) 5 1/4" (133 mm) Aluminum
Midrange	(2) 3" (76 mm) High Excursion
Tweeter	(4) 0.75" (19 mm) Aluminum
Enclosure	Aluminum
Finishes	White Paintable Grille
PCB	FXAQ550S-PB



2185 Park Place, Minden, NV 89423
Ph: 775.461.7500
www.jamesloudspeaker.com

DREAM IT! - WE CAN BUILD IT!