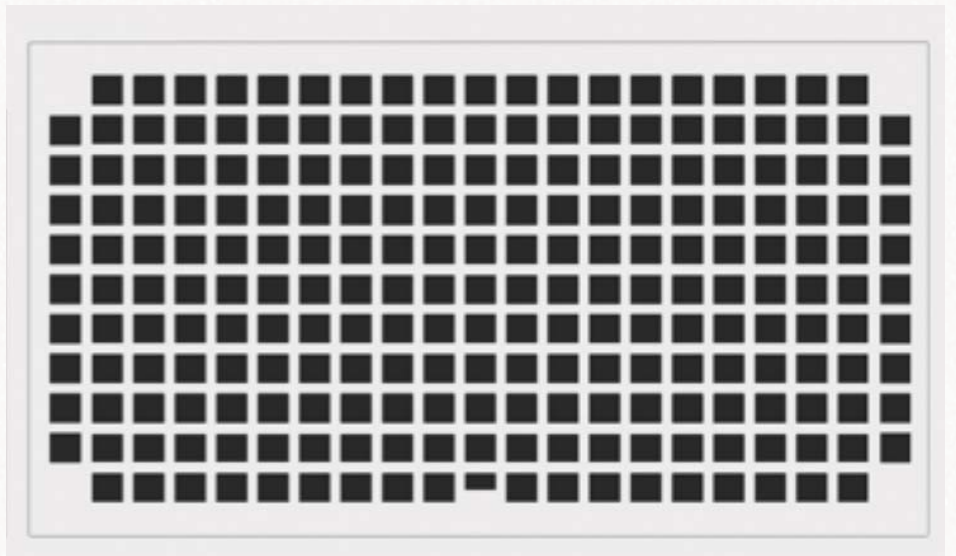


# 2

## HVAC Vents & Diffusers

Drywall, Stone, & Wood Applications



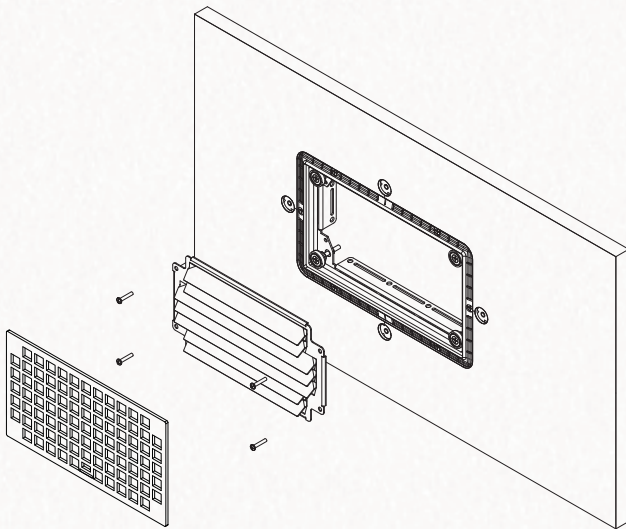
TRUFIG can be installed in a variety of finishes and surfaces. This guide will detail the install of HVAC vents and diffusers in drywall, stone, and wood applications. Because all three use similar install procedures, most of the process will remain the same for all three applications.

## What's in a TRUFIG mounting system?

TRUFIG mounting systems for HVAC are available in two different types: 1) HVAC Vents, and 2) GRG Linear Diffusers. The HVAC Vents contain two major components: 1) mounting platform, and 2) grilles. The GRG Linear Diffusers only contain one component - the diffuser panel. **For more detail on each application, use the link above the image.**

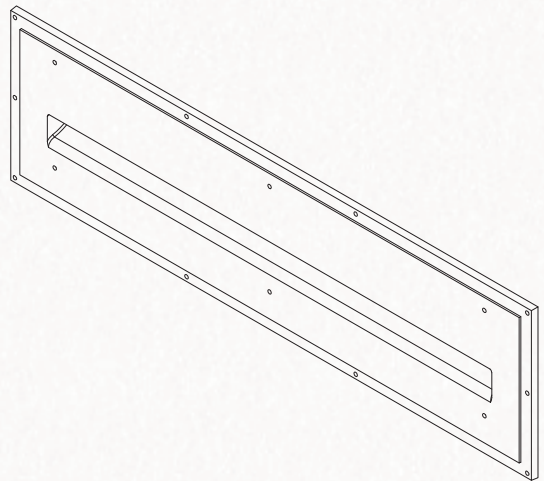
### Drywall Application

HVAC Vent



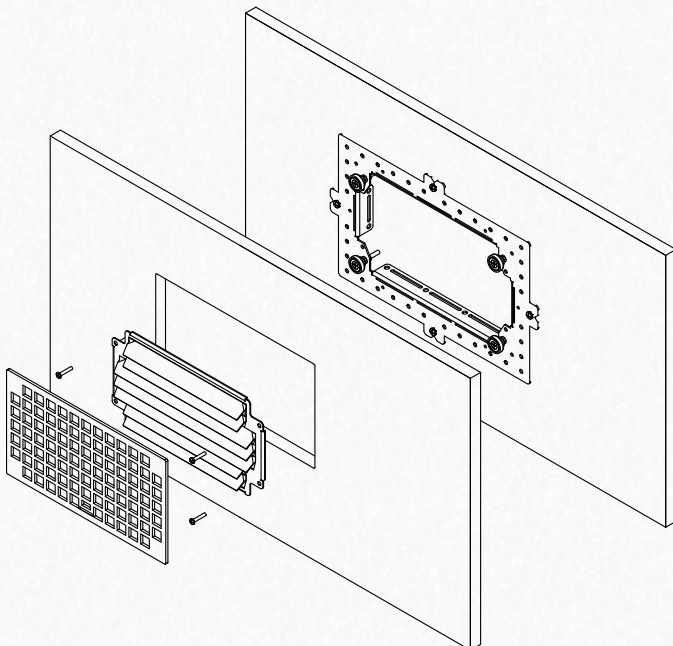
### Drywall Application

GRG Linear Diffuser



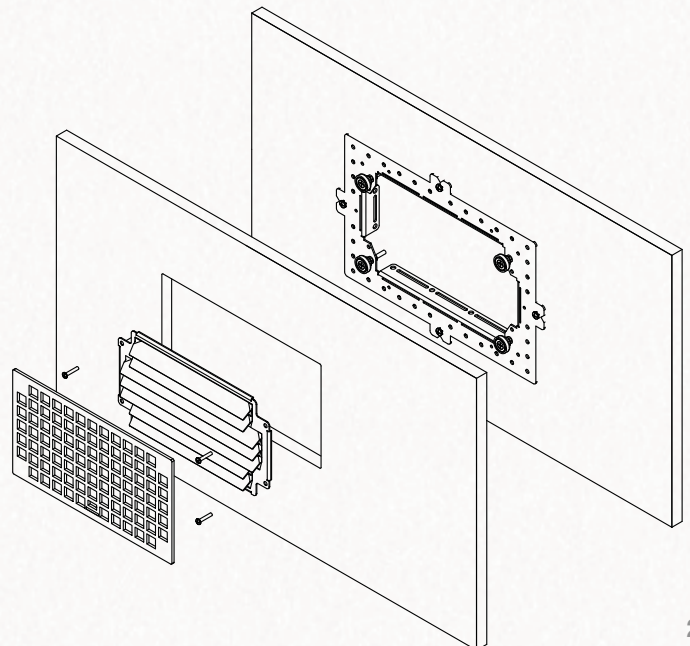
### Wood Application

HVAC Vent



### Stone Application

HVAC Vent





# HVAC Vent Install Guide

The next four steps of the install process are the same for installing drywall, wood, stone, or any other solid surface. The GRG install process is different than HVAC vents - for GRG install see page 34.

## (1) Handling & Preparing the Platform for Install

### Storing the mounting platform

It's recommended that all materials are kept in their original packaging until just before installation. Store them off the ground in a secure, dry area until they are needed. Keep all materials dry and above freezing. At the time of installation and finishing, all materials must be at a temperature of 55°F (12.8°C) or above.

### Cutting the panel bracket

The mounting platforms are designed so that the opening can be positioned anywhere within a standard 16" O.C. stud-bay. However, many installations will require the panel bracket to be cut to size. The panel is made of 100% pressed gypsum board - it can be cut using the score and snap method outlined below, or using a circular saw with a fine tooth blade (or table saw).



#### Step 1- Score

Score the front side of the panel bracket 3-4 times with a utility knife and straight edge.



#### Step 2- Flip & Align

Flip the panel bracket over and align the scored edge with the edge of a hard worktable.



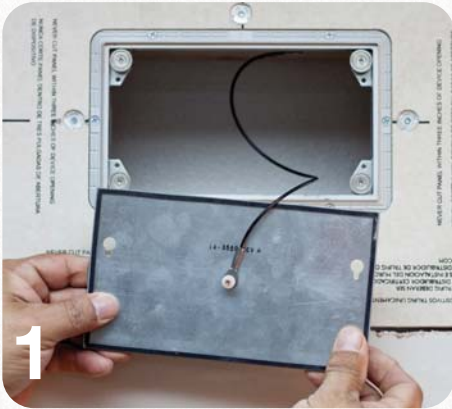
#### Step 3- Snap

Strike the overhang to snap and remove the excess gypsum.



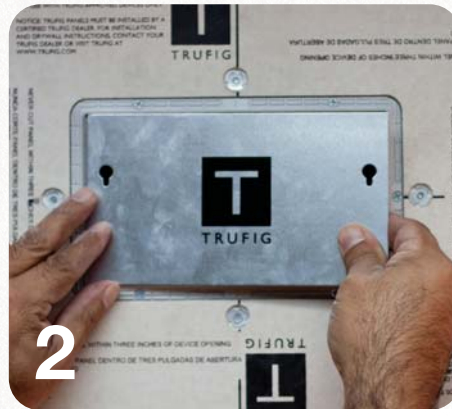
This section will detail the next portion of the install process for drywall applications only including installing the sanding shield, mudding the panel, sanding the panel, and painting the walls.

### (3) Installing the Sanding Shield and Preparing for Mud



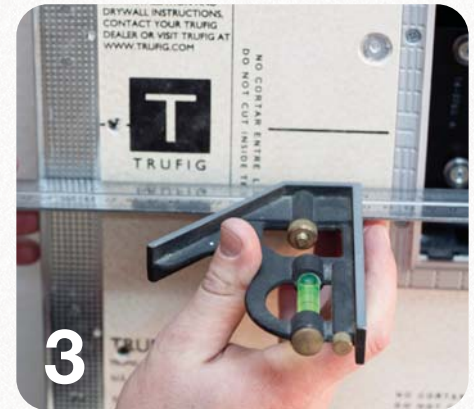
#### Step 1- Attach Lanyard

Be sure that air is not circulating through the system, that the sanding shield is in place, and that the safety lanyard is attached to the sanding shield.



#### Step 2- Snap

Ensure that the mud dam surface is completely clear of any debris and then press the sanding shield into the opening ensuring that the entire perimeter is slightly below the top of the mud dam - about .010" below. If needed, you can adjust the height of the sanding shield using the 4 adjustment screws in the corner of the back bracket.

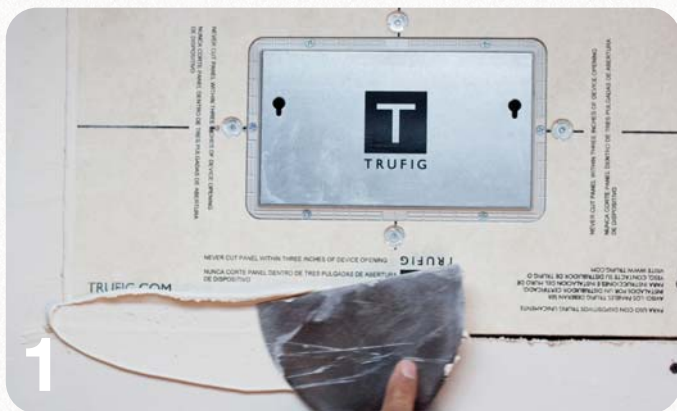


#### Step 3- Check

Prior to proceeding to applying mud to the panel ensure that: 1) the platform is level, 2) the top of the mud dam is level to any surrounding corner bead, and 3) the panel bracket is not recessed in relationship to any surrounding drywall.

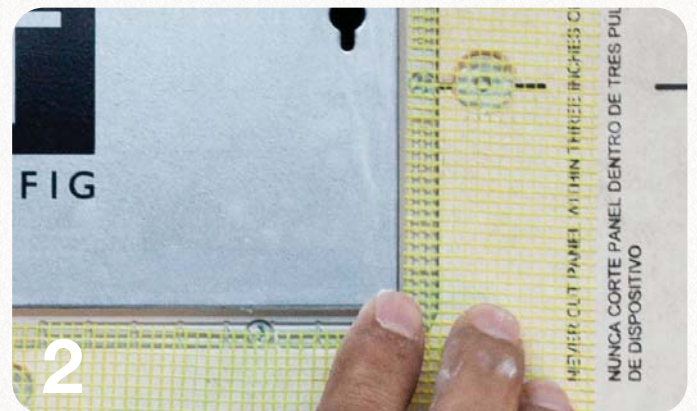
### (4) Mudding the Panel

Below are the steps required in order to achieve a level 5 smooth wall finish on a TRUFIG mounting platform. If a wall with TRUFIG specified for less than a level 5 finish, it is highly recommended that the specification for that wall be changed to level 5. For more information about the different levels of drywall finishes visit the USG website (<http://www.usg.com/documents/construction-handbook/chapter5.pdf>)



#### Step 1- Fill

Using quick-set compound, fill all gaps and let fully cure.



#### Step 2- Tape

Using mesh tape, apply tape around all adjoining surfaces. This includes areas around the panel bracket and up to the mud dam as shown in the photo above.



The next section will detail the next portion of the install process for Solid Surface Applications only including preparing the drywall, preparing the enclosure for mounting, cutting the opening, attaching the enclosure, and mounting the finished panel on the wall.

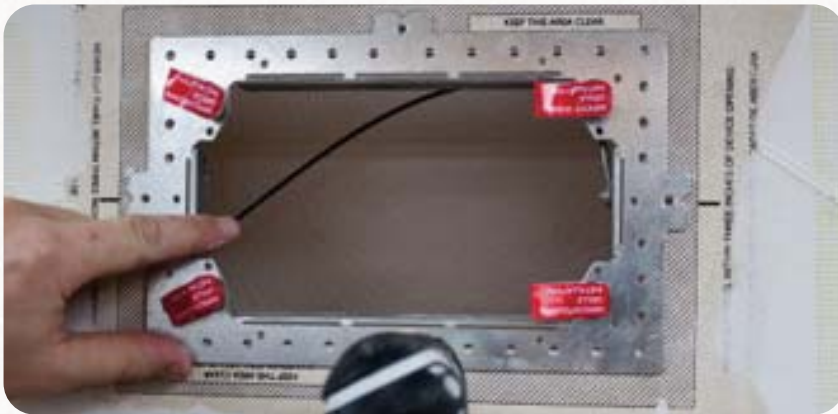
## (1) Preparing the drywall



### Step 1- Mud & Tape

Many codes specify that all drywall joints must be sealed and taped even if they are going to be covered with wood or stone. For this reason, we recommend that the area around the perimeter of the TRUFIG solid surface mounting platform be filled with quick-setting mud and then have tape pressed into the seams. NOTE: it's not necessary to apply the mud around the box enclosure area on a solid surface platform.

## (2) Preparing the back bracket



### Step 1 - Remove

In order to complete a solid surface install the back bracket will need to be removed from the wall/ceiling. Remove the screws that hold the back bracket to the panel bracket - the back bracket should now be loose. If the duct work is already attached, remove the bracket from the wall/ceiling enough to access the screws holding the bracket to the duct work. Next, remove the screws holding the duct work to the back bracket and remove the bracket from the wall.

## (3) Cutting the Grille Opening

Depending on what type of material the TRUFIG HVAC vent is being mounted into, there are a variety of different methods that can be used to cut the grille opening. For harder, dense materials, such as stone or glass, the use of a water jet machine is needed. For softer materials, such as wood, a CNC table or a router template accessory (sold by TRUFIG) can be used. Whatever method is used to cut the opening, it is important to note that the opening needs to be cut **very precise**. Unlike surface mount grilles, TRUFIG grilles do NOT cover the opening that is cut into the material - they install flush to the material surface, therefore leaving zero tolerance for uneven or unclean cuts in the opening.

*(this section is continued on the next page)*



The final section of the install process will apply to **all sizes of HVAC vent** installs. This section includes leveling the grille and grille install.

## (2) Installing the Grille



### Step 1 - Level & Attach

Leveling the grille can be done using just a grill by making adjustments to the four adjustment screws on the back bracket then attaching the grille to check for level finish. However, the process will be much easier if a HVAC Grille and level tool accessory is used (p/n: 50072). This tool will allow you to make adjustments to the trim components and see the results of those adjustments without having to attach and reattach the grille-photo 1. Also, before attaching the grille, be sure to reattach the safety lanyard - photo 2.

### Step 2 - Click

Once the adjustment screws are level, clicking the grille into place is as easy reattaching the safety lanyard and gently releasing the grille into place.