

# 42QW WEDGE SERIES

## 2-WAY FULL RANGE ALL-TERRAIN BOUNDARY LOUDSPEAKER



### (1) 0.75" (19mm) Aluminum Dome Tweeter Quad Array (1) 4" (102mm) Aluminum Woofer

The 42Qw is a specialized boundary application speaker system for integration into a 90-degree corner, such as at 2 walls or a wall and ceiling. Boasting a compact design, this speaker easily integrates into any environment, both indoor and outdoor. The Wedge Series is ideally suited for immersive 3D audio systems, such as Atmos, Auro3D, DTS:X.

With proprietary James Loudspeaker high-excursion woofers and signature aluminum-dome quad-array tweeter, this compact speaker offers silky smooth response across a broad range of frequencies from 24kHz all the way down to below 80Hz, with an impressive sensitivity of 89dB. This versatile speaker works well in both residential and commercial installations where it can be located at ceiling and wall junctures to provide excellent sound performance with minimal visible intrusion into the space.

The 42Qw is constructed entirely of aircraft grade aluminum for strength, sonic performance and durability. An aluminum perforated grille is included to provide years of trouble free use. James Loudspeaker employs a unique mounting system featuring an easy-to-install corner bracket that the speaker clips into and is securely fastened via setscrews.

Custom colors are available.

Size	4.75 h x 12 w x 4.75 d (in) 121 h x 305 w x 121 d (mm)
Freq Response	80Hz-24kHz±3dB
Impedance	4 ohms
Sensitivity	89dB 2.83V /1m
Power req.	25-100 watts
Woofer	(1) 4" (102mm) Aluminum
Tweeter	(4) 0.75" (19mm) Aluminum
Mount	Included Bracket
Finishes	Gloss White, Satin Black, or Custom



2185 Park Place, Minden, NV 89423  
Ph: 775.461.7500  
www.jamesloudspeakers.com



Wedge models include wall/ceiling bracket featuring a unique mounting system allowing a hidden and gapless fit.

# 43QW WEDGE SERIES

## 2-WAY FULL RANGE ALL-TERRAIN BOUNDARY LOUDSPEAKER



### (1) 0.75" (19mm) Aluminum Dome Tweeter Quad Array (2) 4" (102mm) Aluminum Woofer

The 43Qw is a specialized boundary application speaker system for integration into a 90-degree corner, such as at 2 walls or a wall and ceiling. Boasting a compact design, this speaker easily integrates into any environment, both indoor and outdoor. The Wedge Series is ideally suited for immersive 3D audio systems, such as Atmos, Auro3D, DTS:X.

With proprietary James Loudspeaker high-excursion woofers and signature aluminum-dome quad-array tweeter, this compact speaker offers silky smooth response across a broad range of frequencies from 24kHz all the way down to below 75Hz, with an impressive sensitivity of 90dB. This versatile speaker works well in both residential and commercial installations where it can be located at ceiling and wall junctures to provide excellent sound performance with minimal visible intrusion into the space.

The 43Qw is constructed entirely of aircraft grade aluminum for strength, sonic performance and durability. An aluminum perforated grille is included to provide years of trouble free use. James Loudspeaker employs a unique mounting system featuring an easy-to-install corner bracket that the speaker clips into and is securely fastened via setscrews.

Custom colors are available.

Size	4.75 h x 16.75 w x 4.75 d (in) 121 h x 425.5 w x 121 d (mm)
Freq Response	75Hz-24kHz±3dB
Impedance	4 ohms
Sensitivity	90dB 2.83V /1m
Power req.	25 -150 watts
Woofer	(2) 4" (102mm) Aluminum
Tweeter	(4) 0.75" (19mm) Aluminum
Mount	Included Bracket
Finishes	Gloss White, Satin Black, or Custom

*James*  
LOUDSPEAKER

2185 Park Place, Minden, NV 89423  
Ph: 775.461.7500  
www.jamesloudspeakers.com

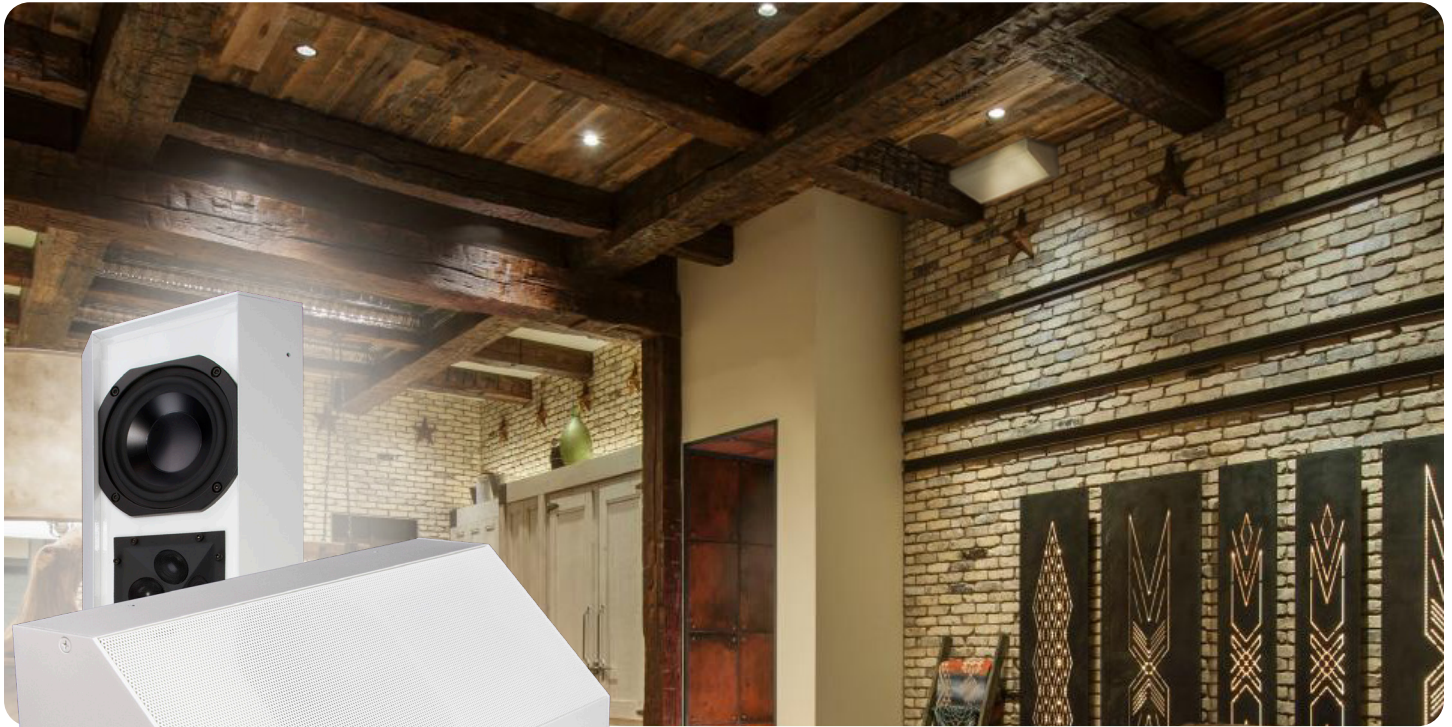
Specifications subject to change without notice.



Wedge models include wall/ceiling bracket featuring a unique mounting system allowing a hidden and gapless fit.

# 52QW WEDGE SERIES

## 2-WAY FULL RANGE ALL-TERRAIN BOUNDARY LOUDSPEAKER



**(1) 0.75" (19mm) Aluminum Dome Tweeter Quad Array**  
**(1) 5.25" (133mm) Aluminum Woofer**

Size 15.5 h x 5.859 w x 6.275 d (in)  
 393.7 h x 148.8 w x 159.4 d (mm)  
 Freq Response 70Hz-24kHz±3dB  
 Impedance 8 ohms  
 Sensitivity 88dB 2.83V /1m  
 Power req. 20 -150 watts  
 Woofer (1) 5.25" (133mm) Aluminum  
 Tweeter (4) 0.75" (19mm) Aluminum  
 Mount Included Bracket  
 Finishes Gloss White, Satin Black,  
 or Custom

The 52QW is a specialized boundary application speaker system for integration into a 90 degree corner, such as at 2 walls or a wall and ceiling. Boasting a compact design this speaker easily integrates into any environment, both indoor and outdoor. The Wedge Series is ideally suited for immersive 3D audio systems, such as Atmos, Auro3D, DTS:X.

With proprietary James high excursion woofers, and the signature James aluminum dome quad-array tweeter, this compact speaker offers silky smooth response across a broad range of frequencies from 24kHz all the way down to below 70Hz, with an impressive sensitivity of 88dB.

This versatile speaker works well in residential and commercial installations where it can be located at ceiling and wall junctures to provide excellent sound performance yet minimal visible intrusion into the space.

The 52QW is constructed entirely of aircraft grade aluminum for strength, sonic performance, and durability, and includes an aluminum perforated grille to provide years of trouble free use. A unique mounting system features an easy to install corner bracket that the speaker clips into and is securely fastened via setscrews.

Custom colors are available.

*James*  
 LOUDSPEAKER

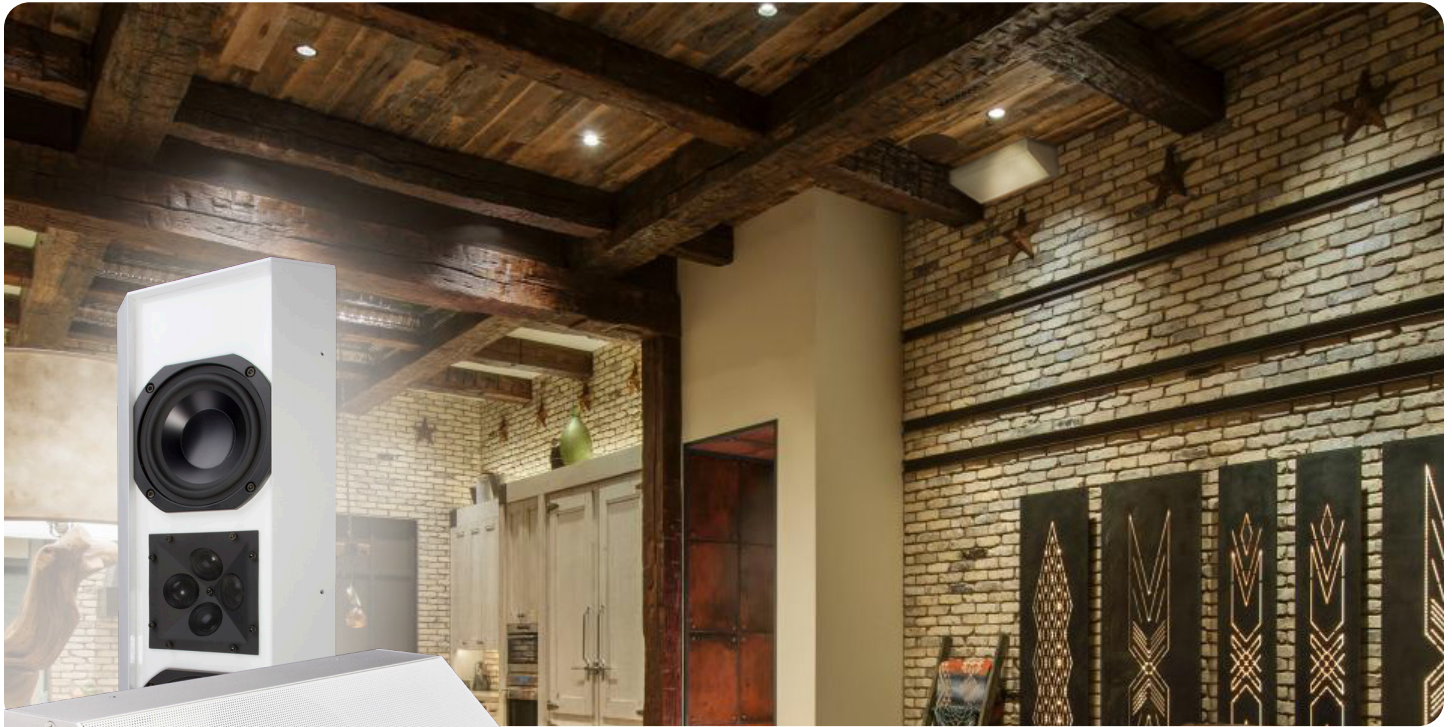
2185 Park Place, Minden, NV 89423  
 Ph: 775.461.7500  
 www.jamesloudspeakers.com



Wedge models include wall/ceiling bracket featuring a unique mounting system allowing a hidden and gapless fit.

# 53QW WEDGE SERIES

## 2-WAY FULL RANGE ALL-TERRAIN BOUNDARY LOUDSPEAKER



**(1) 0.75" (19mm) Aluminum Dome Tweeter Quad Array**  
**(2) 5.25" (133mm) Aluminum Woofers**

Size	22 h x 5.859 w x 6.275 d (in) 558.8 h x 148.8 w x 159.4 d (mm)
Freq Response	68Hz-24kHz±3dB
Impedance	4 ohms
Sensitivity	89dB 2.83V /1m
Power req.	50 -200 watts
Woofer	(2) 5.25" (133mm) Aluminum
Tweeter	(4) 0.75" (19mm) Aluminum
Mount	Included Bracket
Finishes	Gloss White, Satin Black, or Custom

The 53QW is a specialized boundary application speaker system for integration into a 90 degree corner, such as at 2 walls or a wall and ceiling. Boasting a compact design this speaker easily integrates into any environment, both indoor and outdoor. The Wedge Series is ideally suited for immersive 3D audio systems, such as Atmos, Auro3D, DTS:X.

With proprietary James high excursion woofers, and the signature James aluminum dome quad-array tweeter, this compact speaker offers silky smooth response across a broad range of frequencies from 24kHz all the way down to below 68Hz, with an impressive sensitivity of 89dB.

This versatile speaker works well in residential and commercial installations where it can be located at ceiling and wall junctures to provide excellent sound performance yet minimal visible intrusion into the space.

The 53QW is constructed entirely of aircraft grade aluminum for strength, sonic performance, and durability, and includes an aluminum perforated grille to provide years of trouble free use. A unique mounting system features an easy to install corner bracket that the speaker clips into and is securely fastened via setscrews.

Custom colors are available.



Wedge models include wall/ceiling bracket featuring a unique mounting system allowing a hidden and gapless fit.

*James*  
LOUDSPEAKER

2185 Park Place, Minden, NV 89423  
 Ph: 775.461.7500  
[www.jamesloudspeakers.com](http://www.jamesloudspeakers.com)

Specifications subject to change without notice.

20200211