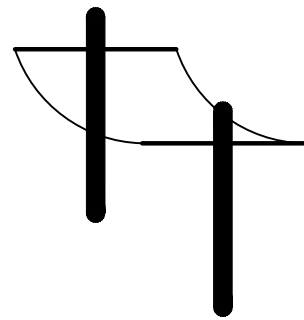


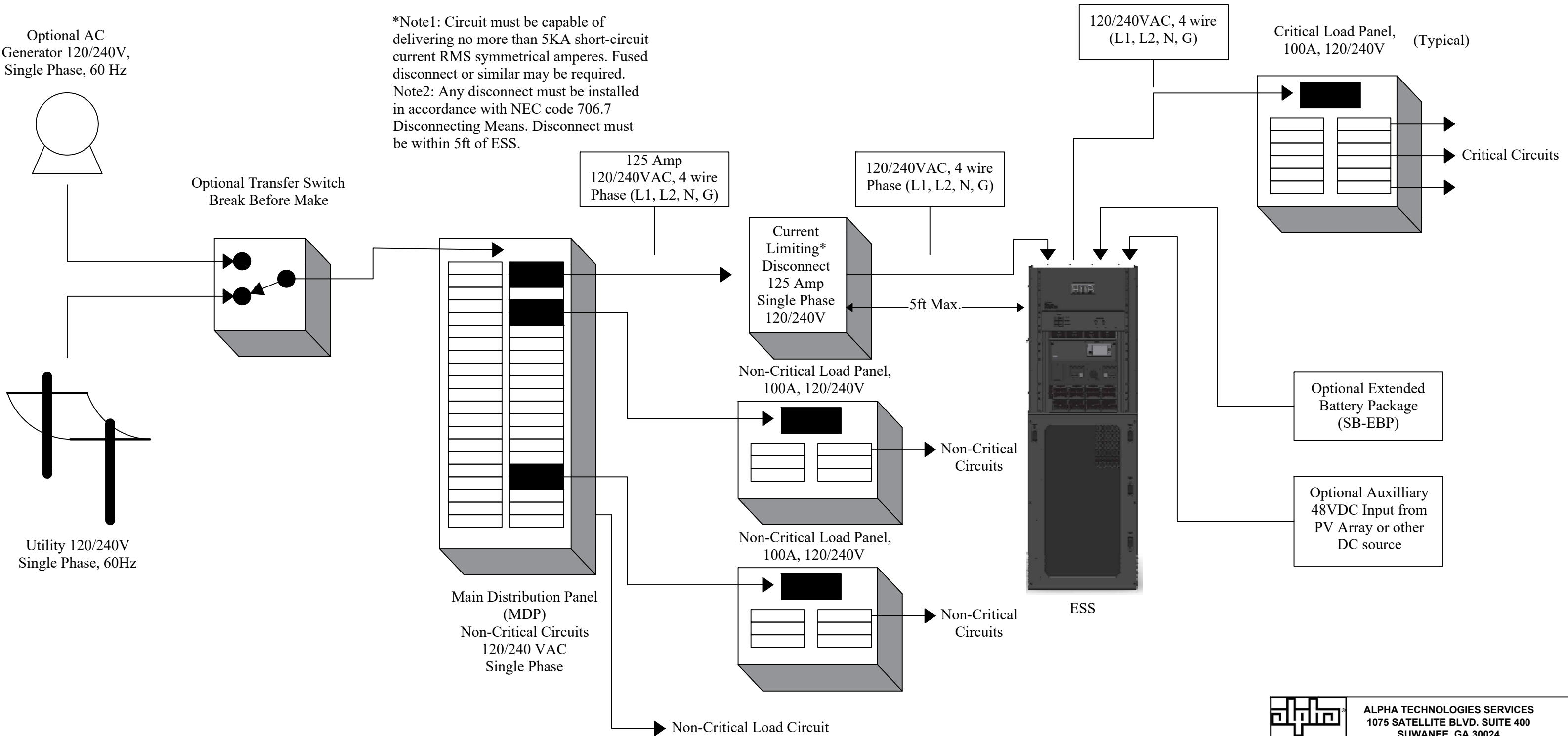
Optional AC Generator 120/240V, Single Phase, 60 Hz

*Note1: Circuit must be capable of delivering no more than 5KA short-circuit current RMS symmetrical amperes. Fused disconnect or similar may be required.
 Note2: Any disconnect must be installed in accordance with NEC code 706.7 Disconnecting Means. Disconnect must be within 5ft of ESS.

Optional Transfer Switch Break Before Make



Utility 120/240V Single Phase, 60Hz



© 2022 Enersys. All Rights Reserved

THESE DESIGNS AND SPECIFICATIONS ARE THE PROPERTY OF ALPHA TECHNOLOGIES SERVICES, AN ENERSYS COMPANY, AND ARE CONFIDENTIAL AND PROPRIETARY. THE DRAWINGS SHALL NOT BE COPIED OR USED FOR ANY PURPOSE WITHOUT ITS WRITTEN CONSENT

ALPHA
 Alpha Technologies Services
 1075 SATELLITE BLVD. SUITE 400
 SUWANEE, GA 30024
 678-475-3995

TITLE : System Power Diagram - SB20

APPROVED BY		DATE	
CHECKED BY		DATE	
DRAWN BY	Eric Estevez	DATE	12/14/2022
ENGINEER		DATE	
CUSTOMER	Rosewater		
CUSTOMER PO		PROJECT:	

MATERIAL	NA	FINISH	NA
WHERE APPLICABLE, REMOVE ALL BURRS/ BREAK ALL SHARP EDGES .03 MAX. STAMP/LABEL PART WITH MFR. ID, AIP PART NUMBER, REVISION, DATE		IF APPLICABLE: TOLERANCES (IN) .XX ± .030 .XXX ± .015 ANGULAR ± .25°	

SCALE		SIZE	B	TYPE	A3	SHEET	1 of 1	REVISION	-
-------	--	------	---	------	----	-------	--------	----------	---