A black DALI RUBIKORE speaker is shown from a top-down perspective, resting on a light-colored wooden surface. The speaker's circular design is prominent, with a central tweeter and a larger woofer section. The brand name 'DALI' is visible on the top part of the speaker. The overall aesthetic is modern and minimalist.

RUBIKORE

DALI RUBIKORE SERIES

DALI RUBIKORE 2
DALI RUBIKORE 6
DALI RUBIKORE 8
DALI RUBIKORE ON-WALL
DALI RUBIKORE CINEMA

The DALI logo consists of a solid red square with the word 'DALI' in white, uppercase, sans-serif font centered within it.

DALI

IN ADMIRATION OF MUSIC



DALI RUBIKORE

EVOLVED THROUGH THE INSPIRATION AND TECHNOLOGY OF THE REMARKABLE DALI KORE FLAGSHIP LOUDSPEAKER, THE RUBIKORE RANGE IS ENGINEERED AND DESIGNED TO SATISFY EVERY HOME AUDIO LOUDSPEAKER ROLE WITH GENUINE HIGH-PERFORMANCE SOUND AND SEDUCTIVE AESTHETIC APPEAL.

EVOLUTION THROUGH KORE TECHNOLOGY

In benefiting from both technologies and engineering principles developed for the incredible DALI KORE ultra-high-end loudspeaker, the RUBIKORE range offers truly remarkable performance across every home audio loudspeaker role.

The RUBIKORE series employ multiple DALI KORE inspired technologies. Clarity Cone™ Technology bass/midrange driver diaphragms help ensure natural midrange clarity, free from colouration, while its powerful new double magnet SMC motor systems minimise driver distortions and losses. Within its crossover circuits, the RUBIKORE employ high audiophile Mundorf™ capacitors and SMC KORE™ inductors to reduce losses still further. And the RUBIKORE enclosures are fitted with new Continuous Flare reflex ports that maximise efficiency while simultaneously minimising turbulence and noise. Also inspired by the EVO-K™ Hybrid Tweeter used in the DALI KORE, the RUBIKORE uses a new Low-Loss dome tweeter without ferrofluid in the magnet gap, for ultimate resolution in the high frequencies.

The RUBIKORE range is not only unique technologies. It is however also about immense versatility of use through floor stand, stand mount, wall mount and home cinema applications, covering every need in the home listening environment - combined with engaging visual appeal and seductive aesthetic quality.

EXCEPTIONAL ACOUSTIC PERFORMANCE

The RUBIKORE are wide bandwidth, loudspeakers packed with DALI KORE inspired technology. The RUBIKORE series is designed to meet the needs of the most ambitious high-end home hi-fi and theatre systems. It combines ultimate musical power and bandwidth with intense natural delicacy and warmth.

EVOLUTION THROUGH KORE TECHNOLOGY

Inspired by the DALI KORE, the RUBIKORE series employ Clarity Cone™ Technology SMC drivers, SMC-KORE™ inductors, Hybrid Tweeter modules with a brand new Low-Loss dome tweeter without ferrofluid and Continuous Flare bass reflex ports to maximise its performance and high-end sound quality.



DANISH FURNITURE DESIGN AND HIGH-END FINISHES

The RUBIKORE combines its remarkable sound quality with elegant, low-resonance enclosure engineering and a luxurious Danish designed and hand-built cabinet, available in four exclusive finishes - High Gloss Black, High Gloss Maroon, Natural Walnut and High Gloss White.

HAND-CRAFTED BY DALI

The RUBIKORE series is hand-crafted and assembled at DALI in Denmark and is predominantly a product of in-house skill, expertise, design, and manufacture. But in addition to its Danish assembly, the RUBIKORE also calls on numerous nearby component suppliers and skills to reinforce its fully Danish roots. RUBIKORE is Danish to the core.

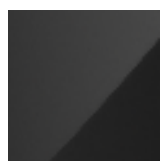
WIDE APPLICATIONS

Comprehensively meeting the needs of contemporary high-performance music in the home is a fundamental aim of the new RUBIKORE range.

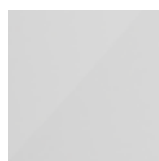
The RUBIKORE series brilliantly covers both traditional stereo and home theatre roles with its very wide bandwidth clarity combined with high dynamic sound reproduction.

The RUBIKORE range has every need covered.

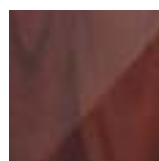
Enclosure Finishes



High Gloss Black



High Gloss White



High Gloss Maroon*



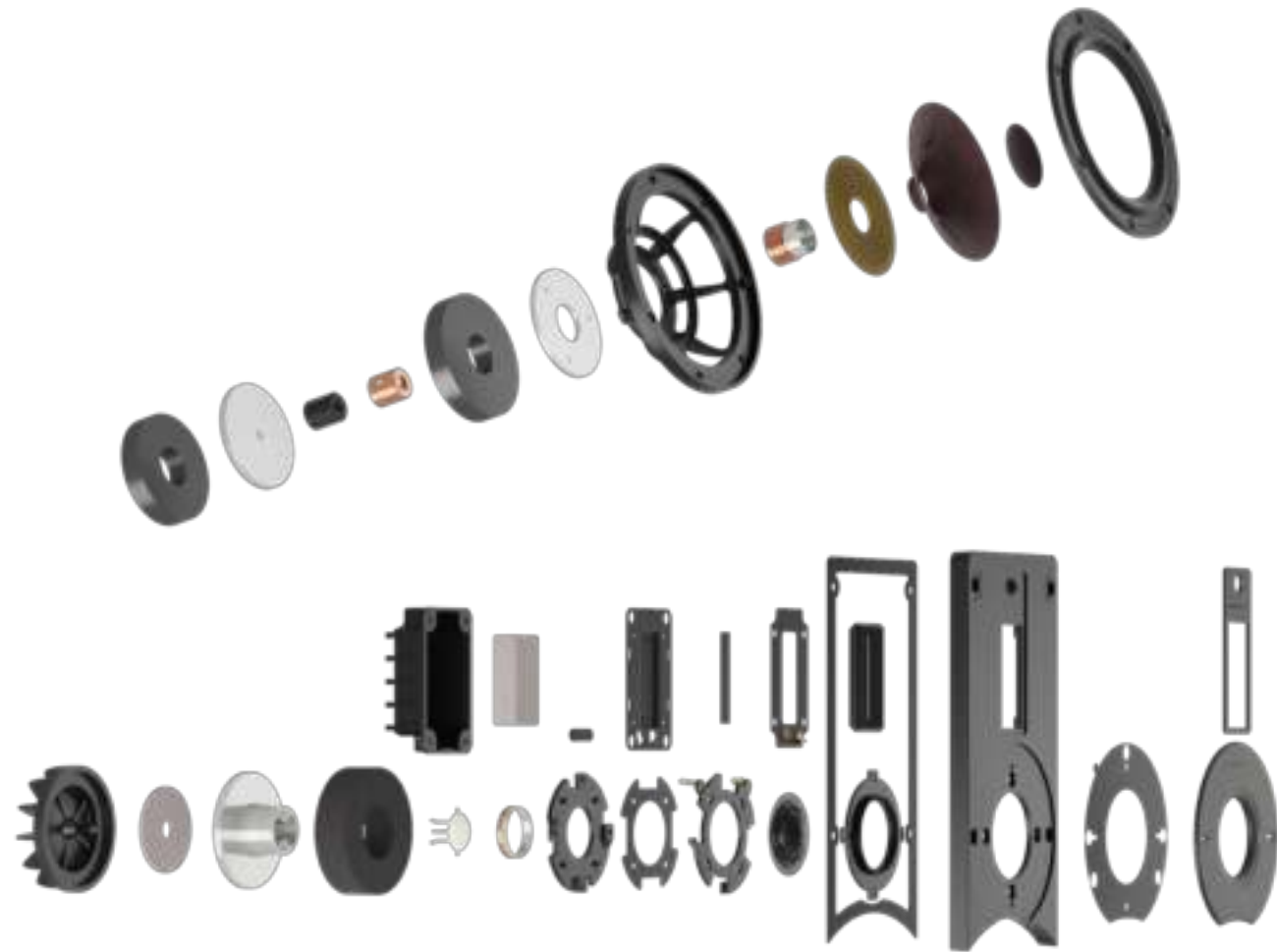
Natural Walnut

*Available for RUBIKORE
2, 6 and 8 only.



DALI RUBIKORE TECHNOLOGIES

- **NEW** 6½-inch SMC and CCT bass/midrange drivers with powerful double magnets
- **NEW** Clarity Cone™ Technology (CCT) - Paper and Wood Fibre cones
- **NEW** Low-Loss Dome Tweeter
- **NEW** Visual Appearance
- **NEW** Continuous Flare Port technology
- **NEW** SMC-KORE™ crossover inductors
- **NEW** Audiophile Mundorf™ crossover components
- Patented Soft Magnetic Composite (SMC) driver technology
- DALI Hybrid Tweeter
- DALI Premium Spike Set aluminium cone outriggers
- Luxury cabinets
- Made by DALI
- Four exclusive finishes
- New Bi-Wire Terminals (RUBIKORE 2)
- Rotatable Hybrid Tweeter module (CINEMA and ON-WALL)



DALI RUBIKORE TECHNOLOGIES

DALI Hybrid Tweeter

The signature DALI Hybrid Tweeter is a master of wide dispersion and high frequency detail. It combines a new Low-Loss soft dome tweeter and a planar tweeter for exceptional high frequency performance.

NEW Low-Loss Dome Tweeter

All the RUBIKORE models employ a completely new dome tweeter design with no ferrofluid in the magnet gap. Inspired by the flagship EVO-K dome tweeter used in the DALI KORE removing the ferrofluid results in better low-level dynamics and a more open and effortless sound.

NEW 6½-inch Low Loss SMC bass/midrange drivers with powerful double magnets

The 6½-inch SMC and Clarity Cone™ Technology drivers used in the RUBIKORE range reproduce a clean, detailed sound with extremely low distortion. The addition of a new powerful double magnet system helps to focus the magnetic field - resulting in lower losses and class leading sound reproduction.

NEW Clarity Cone™ Technology - Paper and Wood Fibre cones

Inspired by the DALI KORE midrange driver, the new Clarity Cone™ Technology paper and wood fibre structure of the RUBIKORE range drivers results in a lightweight yet rigid diaphragm with enhanced resonance suppression for consistent and controlled cone motion.

Premium Spike Set aluminium cone outriggers

The RUBIKORE 8 and 6 features the DALI Premium Spike Set, included in the box. The Premium Spike Set improves the bass and midrange reproduction by coupling the speakers firmly into the floor, improving the impulse response and dynamic capabilities when the loudspeaker is playing.

NEW Visual Apperance

The visual design has been thoroughly evolved on RUBIKORE range. From the newly designed tweeter baffles and covers, to the new premium front grille designs and the exclusive and updated cabinet finishes the RUBIKORE range is much a breath of fresh air in aesthetics as it is in sound quality.

NEW Continous Flare Port technology

The RUBIKORE range employs DALI KORE inspired Continuous Flare Port technology that helps the bass drivers deliver exceptionally deep and distortion-free low frequencies without undesirable port resonance or noise.

NEW Audiophile Mundorf™ crossover components

Using the same SMC KORE™ inductors and hand-picked audiophile grade Mundorf™ capacitors from DALI KORE, the RUBIKORE crossovers deliver class leading performance.

NEW SMC-KORE™ crossover inductors

Come closer to the original recording with our unique SMC-KORE™ crossover inductors, featuring our patented SMC material for lower DC resistance, a shorter signal path, less vulnerability to inductor crosstalk and lower current distortion. (RUBIKORE 6 and 8)

New Bi-Wire Terminals

The new RUBIKORE 2 feature high-quality bi-wire terminals for optional bi-wiring or bi-amping. The DALI designed terminals accept bare wire, bananas or spade lugs and feature gold plated contact points for the lowest contact resistance and lowest possible signal loss.





APPLICATIONS

THE RUBIKORE SERIES IS A VERSATILE LOUDSPEAKER RANGE THAT COVERS ROLES FROM AMBITIOUS HIGH-END STEREO TO HIGH PERFORMANCE HOME THEATRE AND EVEN BACKGROUND SOUND.

WITH IMMENSE VERSATILITY OF USE THROUGH FLOOR STAND, STAND MOUNT, WALL MOUNT AND HOME CINEMA APPLICATIONS, THE RUBOKORE SERIES COVERS EVERY NEED IN THE HOME LISTENING ENVIRONMENT



The **DALI RUBIKORE 2** stand-mount loudspeaker offers the ideal blend of compact size and generous sound. Its immensely rigid cabinet forms the perfect foundation to enable its ultra-light 29 mm soft dome tweeter and 6½ inch low-loss, Clarity Cone™ wood fibre driver to perform optimally. The result is a system characterised by intense clarity, expansive imagery and generous bass with both precision and timing.

DALI RUBIKORE 2

Frequency range	50 - 26,000 Hz ±3 dB
Sensitivity	87 dB @ 1 m for 2.83 V
Nominal impedance	4 Ohm
Maximum SPL	107 dB
Crossover frequency	2,800 Hz
Crossover principle	2-way
Recommended amplifier power	40 - 150 Watt
High frequency driver(s)	1 x 29 mm low loss soft dome
High frequency diaphragm	Soft woven fabric
Low/Mid frequency driver(s)	1 x 6½ inch
Low/Mid frequency diaphragm	Clarity Cone™ paper and wood fibre
Connection input(s)	Bi-wire / Bi-amp
Enclosure type	Bass reflex
Bass reflex tuning frequency	44 Hz
Other features	N/A
Recommended placement	Stand / Shelf
Recommended distance from rear wall	20 - 120 cm
Dimensions (H x W x D)	350 x 195 x 335 mm 13.9 x 7.7 x 13.3 inches
Weight incl. grille	9.5 kg / 20.9 lb
Shipping weight	10.5 kg / 23.1 lb
Finishes	High Gloss Black High Gloss Maroon Natural Walnut High Gloss White
Accessories	Manual Polishing cloth (high gloss finish only) Front Grille Rubber Feet
Spike thread size	M8

All technical specifications are subject to change without notice.



The **DALI RUBIKORE 6** floorstanding loudspeaker features twin 6½-inch SMC and Clarity Cone™ Technology paper and wood fibre woofers, integrated with the unique DALI Hybrid tweeter. The twin woofers combine at low frequencies to create room filling bass bandwidth and volume. At midrange frequencies, just one woofer takes over to focus on the core of the music, to which the Hybrid tweeter adds immense musical detail and clarity.

DALI RUBIKORE 6

Frequency range	38 - 34,000 Hz ±3 dB
Sensitivity	88.5 dB @ 1 m for 2.83 V
Nominal impedance	4 Ohm
Maximum SPL	110dB
Crossover frequency	800 / 2,600 / 14,000 Hz
Crossover principle	2½ + ½-way
Recommended amplifier power	40 - 200 Watt
High frequency driver(s)	17 x 45 mm planar magnetostatic tweeter 1 x 29 mm low loss soft dome
High frequency diaphragm	Planar magnetostatic Soft woven fabric
Low/Mid frequency driver(s)	2 x 6½ inch
Low/Mid frequency diaphragm	Clarity Cone™ paper and wood fibre
Connection input(s)	Bi-wire / Bi-amp
Enclosure type	Bass reflex
Bass reflex tuning frequency	34 Hz
Other features	N/A
Recommended placement	Floor
Recommended distance from rear wall	20 - 180 cm
Dimensions (H x W x D)	990 x 200 x 380 mm 39.1 x 7.9 x 15.0 inches
Weight incl. grille	23 kg / 50.7 lb
Shipping weight	25 kg / 55.1 lb
Finishes	High Gloss Black High Gloss Maroon Natural Walnut High Gloss White
Accessories	Manual Polishing cloth (high gloss finish only) Front Grille Premium Spike Set
Spike thread size	M8

All technical specifications are subject to change without notice.

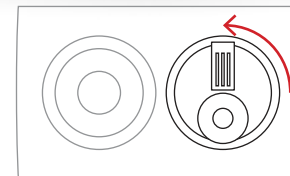


Upping the audio ante to the max, the **DALI RUBIKORE 8** can generate stunning musical soundscapes with ease. Its immensely powerful trio of woofers integrate the bass and midrange bands seamlessly, while the detail and wide dispersion of its DALI hybrid tweeter help it fill even the largest listening spaces with rich clarity and pin-sharp imaging. The RUBIKORE 8 represents the pinnacle of the RUBIKORE entry into pure high-end sound, but at a midrange price.

DALI RUBIKORE 8

Frequency range	38 - 34,000 Hz ± 3 dB
Sensitivity	90.5 dB @ 1 m for 2.83 V
Nominal impedance	4 Ohm
Maximum SPL	112dB
Crossover frequency	500 / 800 / 2,400 / 14,000 Hz
Crossover principle	2½ + ½ + ½-way
Recommended amplifier power	40 - 250 Watt
High frequency driver(s)	17 x 45 mm planar magnetostatic tweeter 1 x 29 mm low loss soft dome
High frequency diaphragm	Planar magnetostatic Soft woven fabric
Low/Mid frequency driver(s)	3 x 6½ inch
Low/Mid frequency diaphragm	Clarity Cone™ paper and wood fibre
Connection input(s)	Bi-wire / Bi-amp
Enclosure type	Bass reflex
Bass reflex tuning frequency	33 Hz
Other features	N/A
Recommended placement	Floor
Recommended distance from rear wall	25 - 180 cm
Dimensions (H x W x D)	1100 x 220 x 444 mm 43.5 x 8.7 x 17.6 inches
Weight incl. grille	30 kg / 66.1 lb
Shipping weight	33 kg / 72.7 lb
Finishes	High Gloss Black High Gloss Maroon Natural Walnut High Gloss White
Accessories	Manual Polishing cloth (high gloss finish only) Front Grille Premium Spike Set
Spike thread size	M8

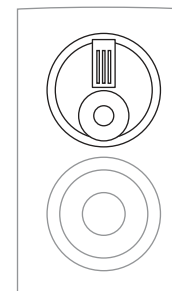
All technical specifications are subject to change without notice.



The **DALI RUBIKORE ON-WALL** is a versatile multipurpose performer. Its 6½-inch Clarity Cone™ wood fibre woofer and rotatable DALI Hybrid tweeter are integrated into a neatly engineered low-profile wall-mount enclosure that ingeniously employs the wall as part of its reflex port for deeply impressive bass.

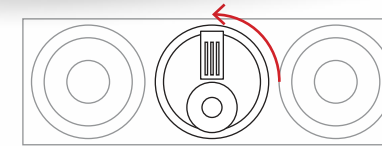
The ON-WALL is ideal for both stereo and multichannel roles and in both it delivers fabulously detailed and expansive, wide bandwidth, high performance sound.

DALI RUBIKORE ON-WALL

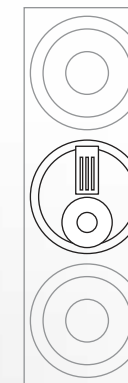


Frequency range	59 - 34,000 Hz ± 3 dB
Sensitivity	88.5 dB @ 1 m for 2.83 V
Nominal impedance	4 Ohm
Maximum SPL	108 dB
Crossover frequency	2,900 / 14,000 Hz
Crossover principle	2 + ½-way
Recommended amplifier power	20 - 150 Watt
High frequency driver(s)	17 x 45 mm planar magnetostatic tweeter 1 x 29 mm low loss soft dome
High frequency diaphragm	Planar magnetostatic Soft woven fabric
Low/Mid frequency driver(s)	1 x 6½ inch
Low/Mid frequency diaphragm	Clarity Cone™ paper and wood fibre
Connection input(s)	Single wire
Enclosure type	Bass reflex
Bass reflex tuning frequency	49 Hz
Other features	Rotatable Hybrid Tweeter module
Recommended placement	On-wall / Shelf
Recommended distance from rear wall	0 - 30 cm
Dimensions (H x W x D)	465 x 278 x 142 mm 18.4 x 11.0 x 5.6 inches
Weight incl. grille	8.5 kg / 18.7 lb
Shipping weight	9.5 kg / 20.9 lb
Finishes	High Gloss Black Natural Walnut High Gloss White
Accessories	Manual Polishing cloth (high gloss finish only) Front Grille Rubber Feet
Spike thread size	N/A

All technical specifications are subject to change without notice.



The **DALI RUBIKORE CINEMA** strikes a perfect balance between versatility, size and performance to be the ultimate DALI LCR loudspeaker. Its two 6½-inch low-loss, Clarity Cone™, wood fibre woofers deliver both expansive, extended bass, and the transparently explicit midrange quality so vital for centre channel roles. And the rotatable Hybrid tweeter module adds wide dispersion, high frequency finesse and detail, on top of both portrait and landscape mounting options. The RUBIKORE CINEMA is a full-blown LCRS solution for the highest performance home cinema systems.



DALI RUBIKORE CINEMA

Frequency range	49 - 34,000 Hz ±3 dB
Sensitivity	89 dB @ 1 m for 2.83 V
Nominal impedance	4 Ohm
Maximum SPL	111 dB
Crossover frequency	2,800 / 14,000 Hz
Crossover principle	2 + ½-way
Recommended amplifier power	40 - 200 Watt
High frequency driver(s)	17 x 45 mm planar magnetostatic tweeter 1 x 29 mm soft dome
High frequency diaphragm	Planar magnetostatic Soft woven fabric
Low/Mid frequency driver(s)	2 x 6½ inch
Low/Mid frequency diaphragm	Clarity Cone™ paper and wood fibre
Connection input(s)	Bi-wire / Bi-amp
Enclosure type	Bass reflex
Bass reflex tuning frequency	36 Hz
Other features	Rotatable Hybrid Tweeter module
Recommended placement	Stand / Shelf
Recommended distance from rear wall	5 - 100 cm
Dimensions (H x W x D)	197 x 581 x 400 mm 7.7 x 22.8 x 15.7 inches
Weight incl. grille	16 kg / 35.2 lb
Shipping weight	17.5 kg / 38.5 lb
Finishes	High Gloss Black Natural Walnut High Gloss White
Accessories	Manual Polishing cloth (high gloss finish only) Front Grille Rubber Feet
Spike thread size	N/A

All technical specifications are subject to change without notice.



IN ADMIRATION OF MUSIC



dali-speakers.com/rubikore